

These trails are connected.

2020 Vermont ATV Trail Map

VASA

VERMONT ATV SPORTSMAN'S ASSOCIATION

TRAIL MAP

vtvasa.org

VASA: Rules & Safety Information

To ensure that the trails are safe and enjoyable for yourself and others, know and obey these trail rules!

- Stay on marked trails.
- Abide by all VASA rules, and state and federal ATV laws.
- All ATVs must have valid registration and current membership decal displayed.
- Trails will open and close per the landowner.
- Reckless or negligent operation is not permitted at any time.
- Practice "carry-in, carry-out, stewardship."
- Do not drive, or pursue, wildlife or livestock.
- Only use roads designated as "open" for ATVs.
- Learn all controls and safety devices before you ride your ATV.
- Take an ATV safety course.
- Read your owner's manual. Twice.
- Follow all ATV safety recommendations from the manufacturer.
- Wear protective clothing when you ride.
- Always wear a helmet & eye protection.
- Never let young or inexperienced riders operate ATVs without proper instruction and supervision.
- Never use alcohol or drugs when you ride.
- Never ride alone, and tell someone your route and plans.
- Obey the local, state, and federal laws.
- Never modify the exhaust system.
- Less sound = more ground.
- Tread lightly!

VASA: Rules & Safety Information

14 Don Camp Drive, Barre, Vermont 05641
 (802) 477-5075 email: office@vtvasa.org
 Department of Motor Vehicles (802) 828-2000
 Department of Fish and Wildlife (802) 828-1000
 Department of Tourism (802) 828-3676

4/20/18M Design by PMA, Inc. | Beacom

VASA: The Vermont All-Terrain Vehicle Sportsman's Association

VASA is the statewide association of local ATV clubs, authorized by the State of Vermont through the state VASA ATV trails throughout the state. VASA is dedicated to developing, promoting and conserving responsible family-based ATV recreation in Vermont, and is providing trail access through leadership, land stewardship, partnerships, and collaborations with other user groups and landowners.

VASA, through its local clubs and in collaboration with local, state and federal land managers, is working to develop and manage a statewide ATV trail system of corridors, links and local trails, for the enjoyment of Vermont's families and guests.

You can help by joining and becoming active in your local club, practicing good ATV ethics and trail safety, and by presenting a good image of our sport each and every time you ride.

Your fellow VASA members work hard each year to open up and maintain trails in their communities. Show them your appreciation. Show them you belong to the club for the trail. They will thank you by continuing the good work already done and creating even more trails. Please ride responsibly while enjoying the VASA trail system.

Please take a moment to thank the landowners who generously allow us to use their land, and please remember that it is a privilege to use your ATV on their land, not a right!

Vermont Clubs

BENNINGTON COUNTY

BTC Bennington Trail Outfitters
 Mike Smith (802) 278-3385
 JPP Jack Pines Primitives
 Joe Berard (413) 652-2616

ORANGE COUNTY

WATV Westshire ATV Club
 Doug Stone (802) 785-2140
 TWW Tri-Village Wheelers
 Chris Puhney (802) 793-9938

ORLEANS COUNTY

BLRR Back to the Ridge Riders
 Scott Jennings (802) 274-3870

ROULAND COUNTY

WRASC West Rutland
 David Noel (802) 681-5795

WASHINGTON COUNTY

CVATV Central Vermont ATV Club
 Tom Pierce (802) 839-9882
LMAC Lost Nation
 Adam Lane (802) 498-6690
ATV Club
 Chad Sterling (802) 695-2280

TCATV Tri County ATV Club
 Chris Puhney (802) 793-9938

NEVERLOAN COUNTY

NEKVR Northeast Kingdom Wheelers
 Ken Wetmore (802) 274-2633

NEWFANE COUNTY

BTB Barnett Trail Blazers
 Chris Hill (802) 556-4105

ESSEX COUNTY

TOW Top of the World
 Chad Sterling (802) 695-2280

FRANKLIN COUNTY

WVWR Vermont Wheelers
 Jeff Curtis (802) 347-3183

QUINCY COUNTY

QUAC Queen Lulls
 Scott Boyle (802) 786-6150

LANOILLE COUNTY

GMATV Green Mountain ATV Club
 Shannon Friedrich (802) 279-7813

ORANGE COUNTY

WATV Westshire

WASHINGTON COUNTY

CVATV Central Vermont ATV Club

NEVERLOAN COUNTY

NEKVR Northeast Kingdom Wheelers

NEWFANE COUNTY

BTB Barnett Trail Blazers

ESSEX COUNTY

TOW Top of the World

FRANKLIN COUNTY

WVWR Vermont Wheelers

QUINCY COUNTY

QUAC Queen Lulls

LANOILLE COUNTY

GMATV Green Mountain ATV Club

BENNINGTON COUNTY

BTC Bennington Trail Outfitters

ORANGE COUNTY

WATV Westshire

ORLEANS COUNTY

BLRR Back to the Ridge Riders

ROULAND COUNTY

WRASC West Rutland

WASHINGTON COUNTY

CVATV Central Vermont ATV Club

NEVERLOAN COUNTY

NEKVR Northeast Kingdom Wheelers

NEWFANE COUNTY

BTB Barnett Trail Blazers

ESSEX COUNTY

TOW Top of the World

FRANKLIN COUNTY

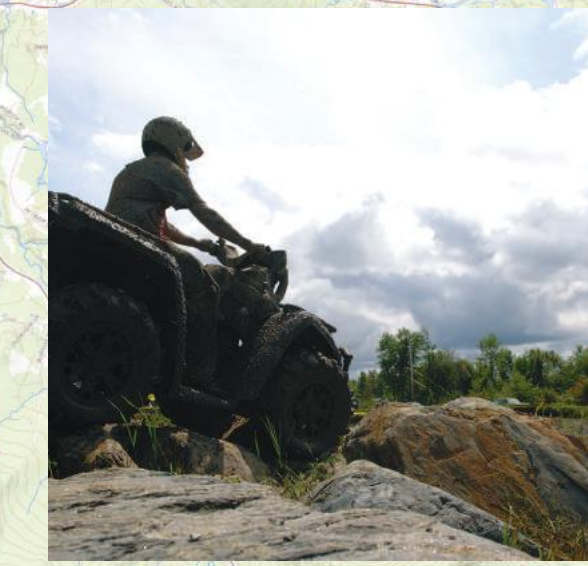
WVWR Vermont Wheelers

QUINCY COUNTY

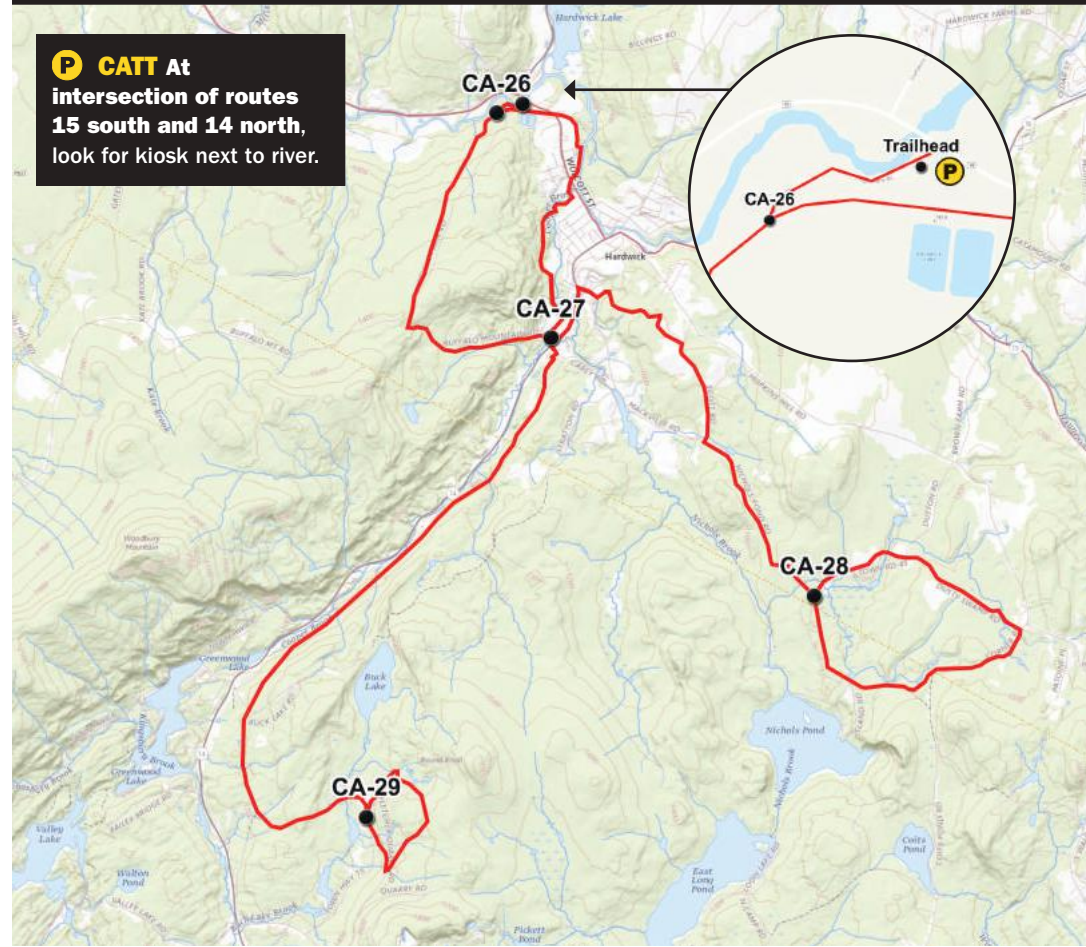
QUAC Queen Lulls

LANOILLE COUNTY

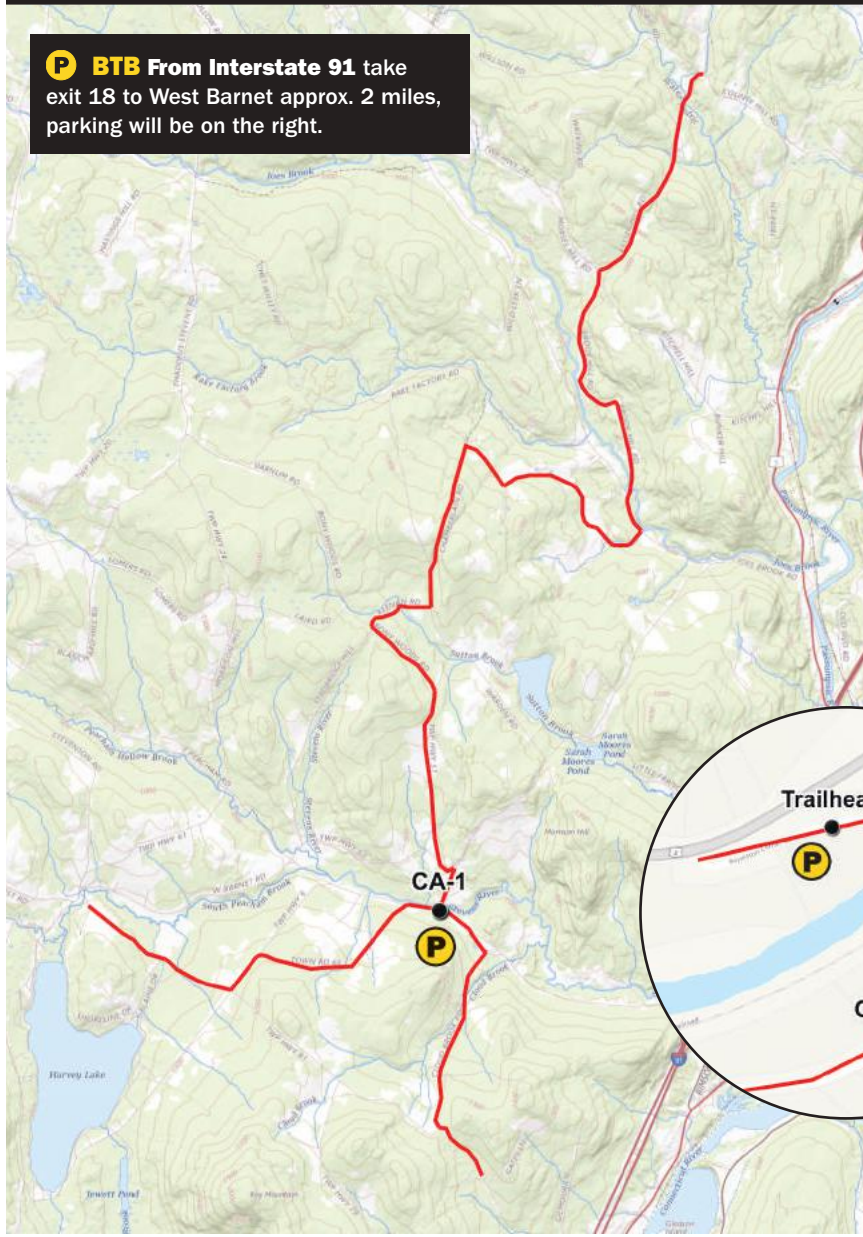
GMATV Green Mountain ATV Club



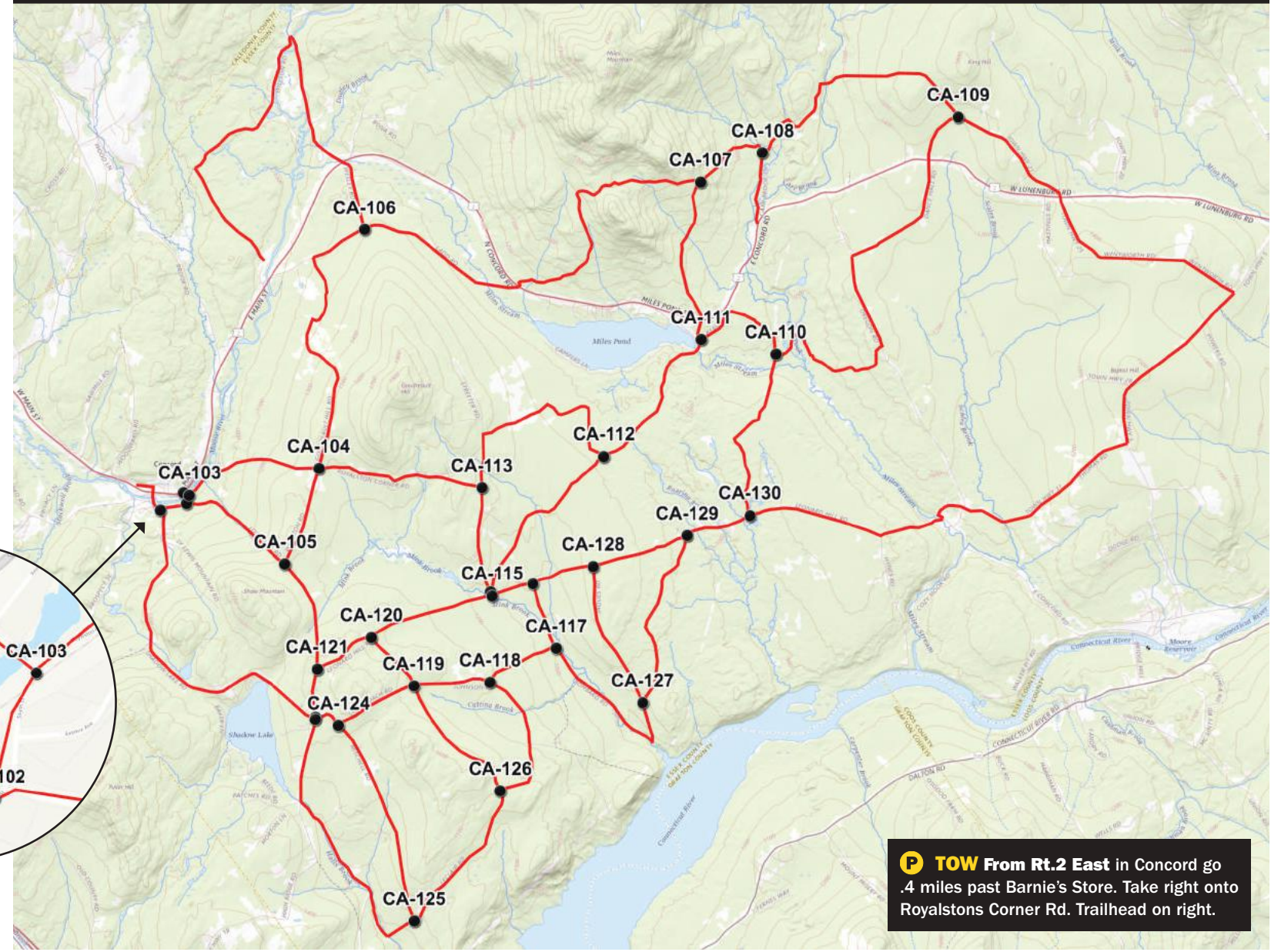
MAP G Hardwick CATT



MAP H Barnet BTB



MAP I Concord TOW

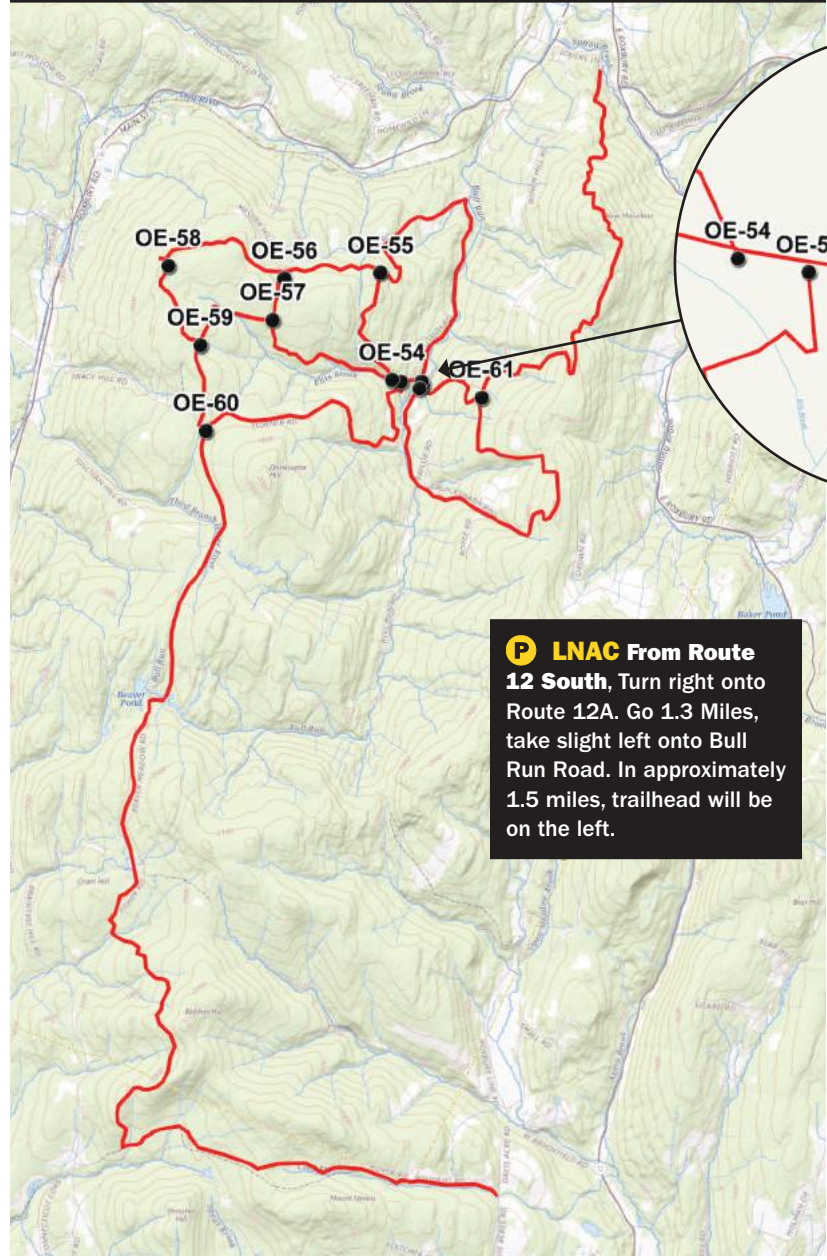


VASA: Rules & Safety Information

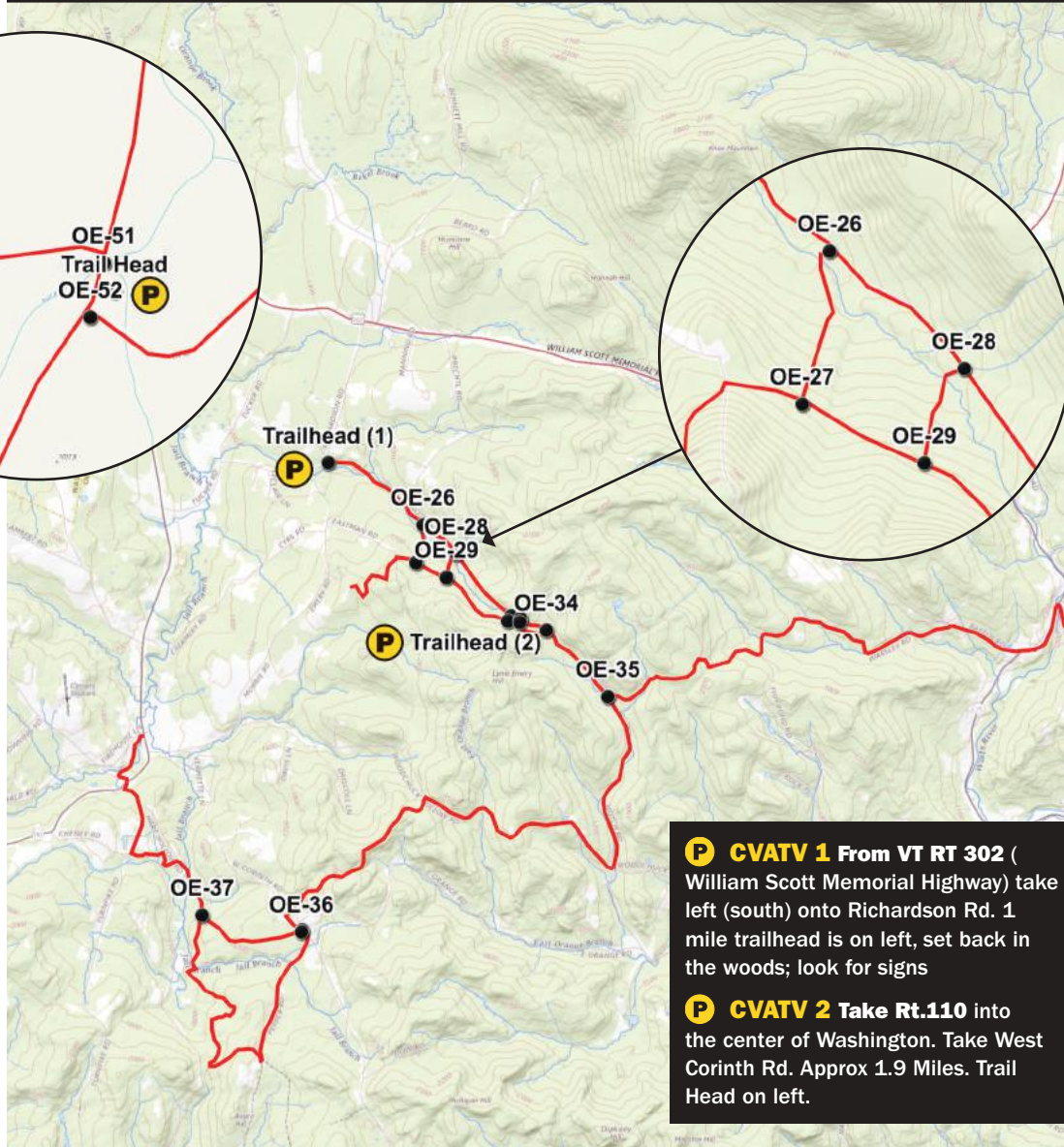
To ensure that the trails are safe and enjoyable for yourself and others, know and obey these trail rules!

- Stay on marked trails.
- Abide by all VASA rules; and state and federal ATV laws.
- All ATVs must have valid registration and current membership decal displayed.
- Trails will open and close per the landowner.
- Reckless or negligent operation is not permitted at any time.
- Practice "carry-in, carry-out" stewardship.
- Do not drive, or pursue, wildlife or livestock.
- Only use roads designated as "open" for ATVs.
- Learn all controls and safety devices before you ride your ATV.
- Take an ATV safety course.
- Read your owner's manual. Twice.
- Follow all ATV safety recommendations from the manufacturer.
- Wear protective clothing when you ride.
- Always wear a helmet & eye protection.
- Never let young or inexperienced riders operate ATVs without proper instruction and supervision.
- Never use alcohol or drugs when you ride.
- Never Ride alone, and tell someone your route and plans.
- Obey the local, state, and federal laws.
- Never modify the exhaust system.
- Less sound = more ground.
- Tread lightly!

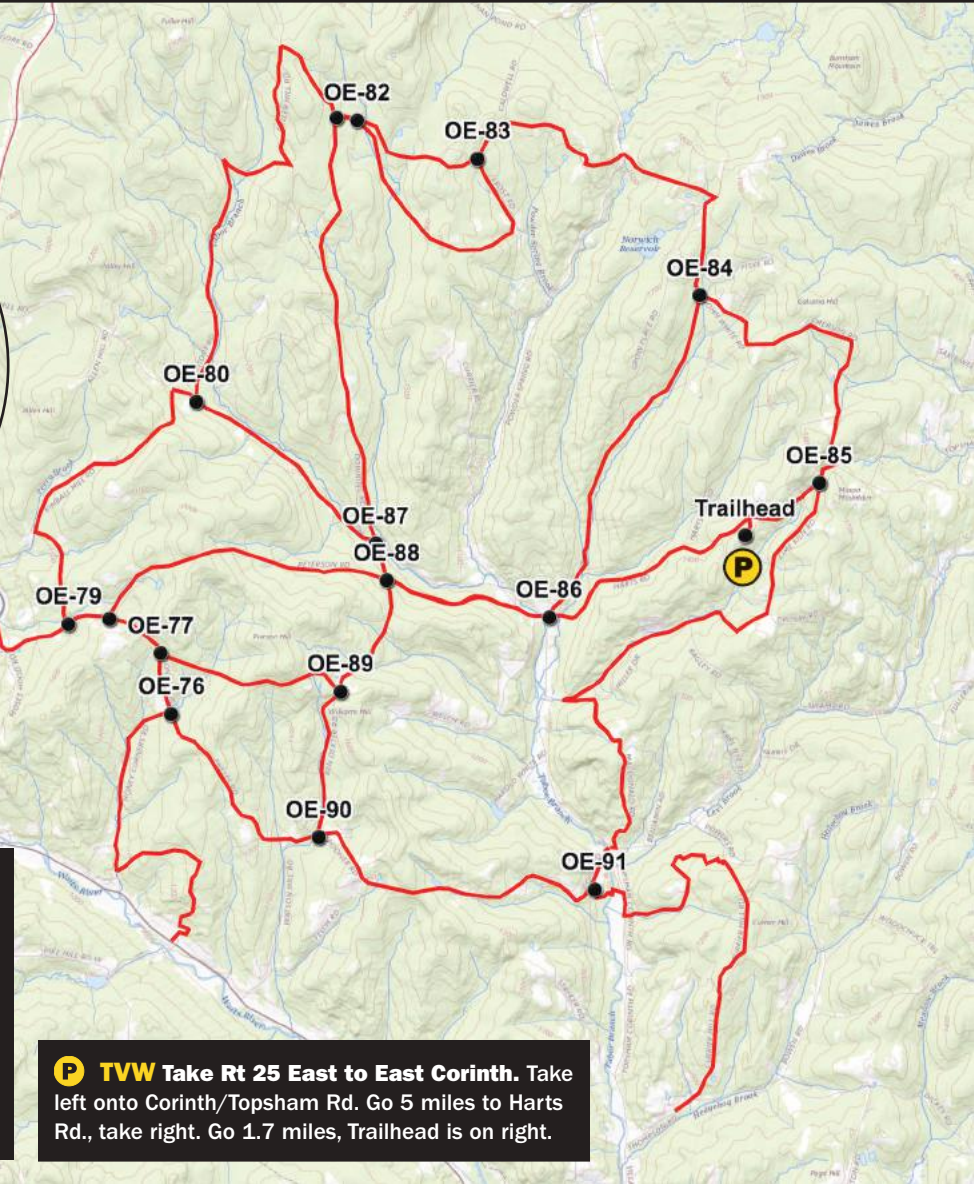
MAP J Roxbury LNAC



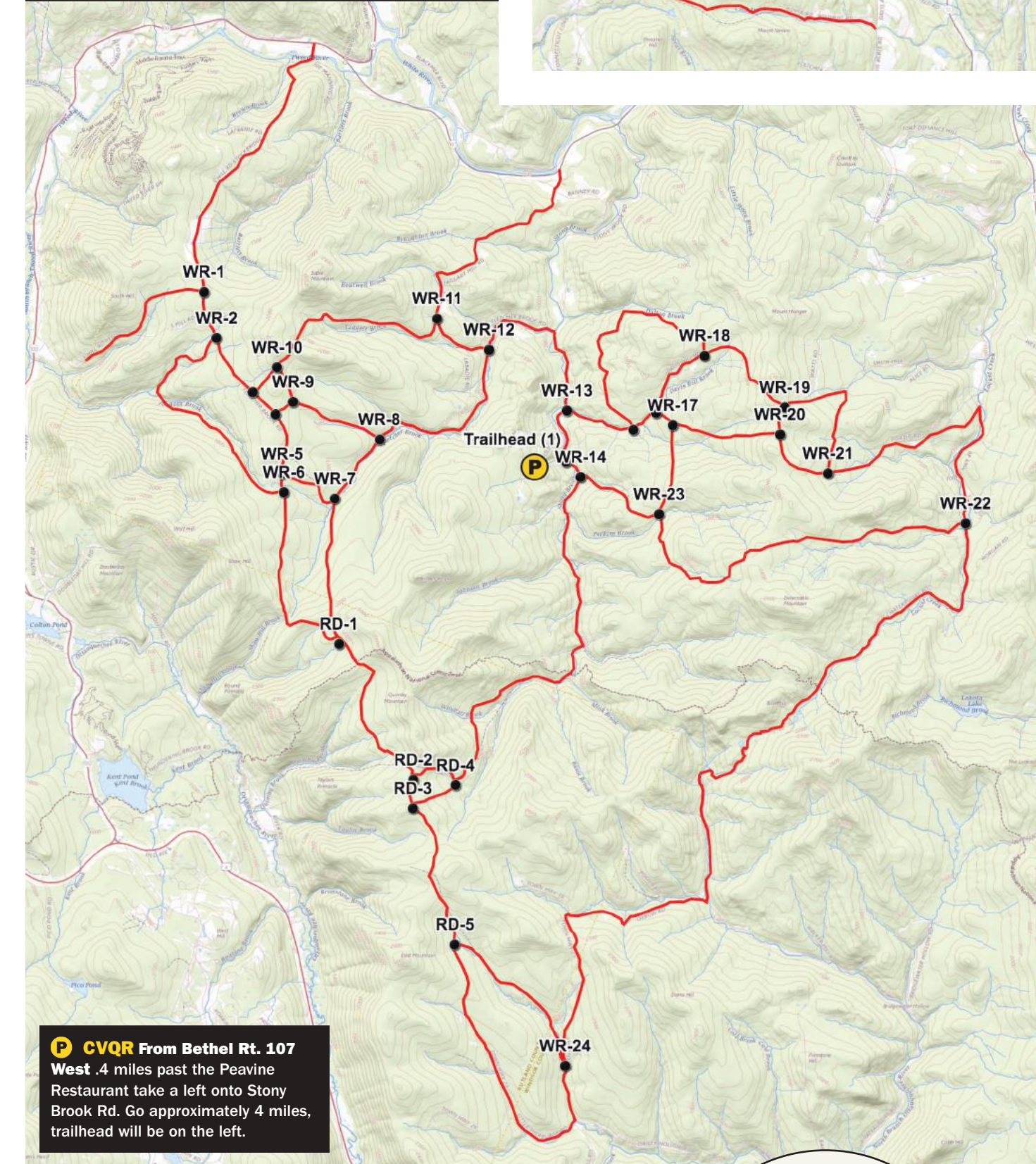
MAP K Washington CVATV



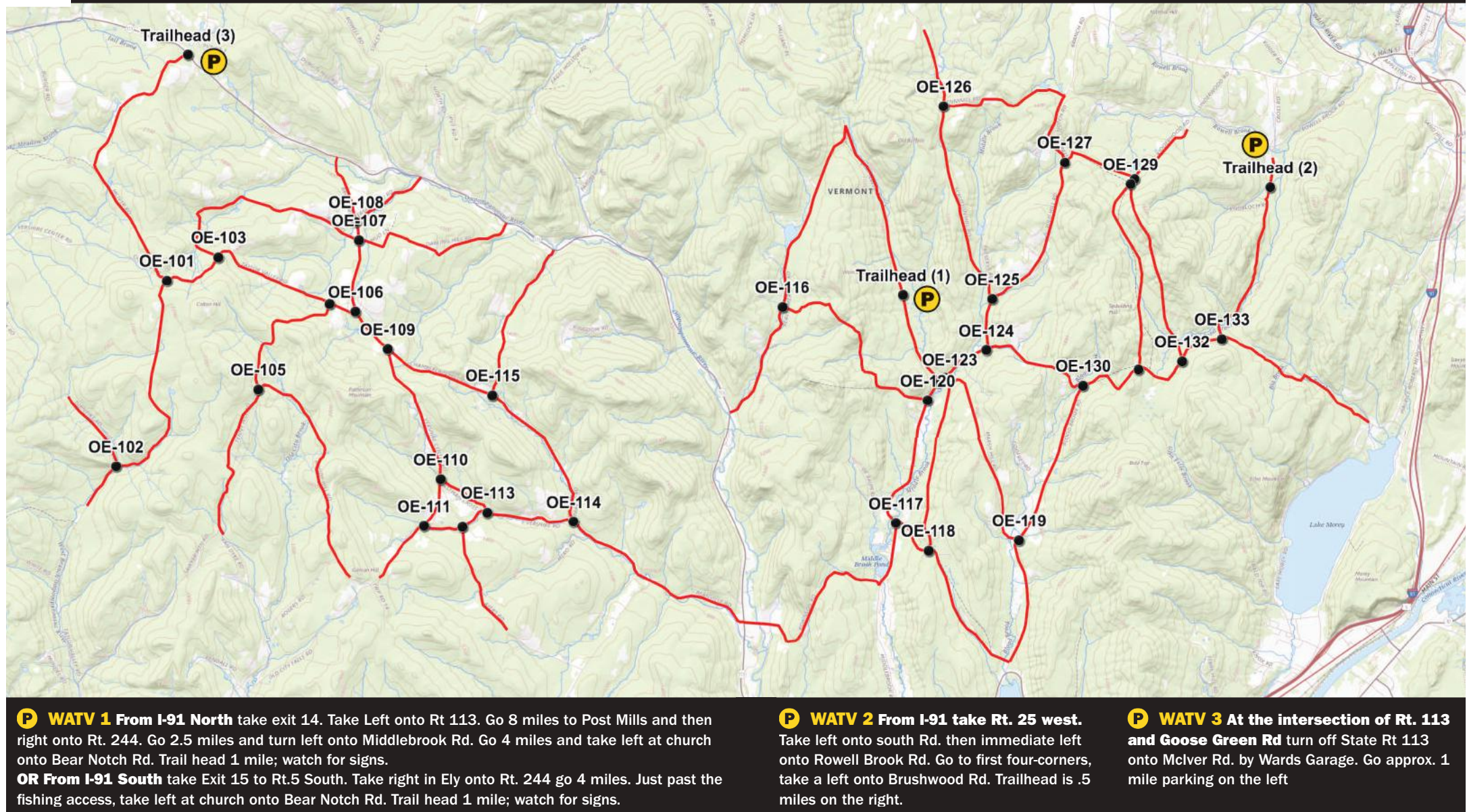
MAP L Topsham TWV



O Stokbridge CVQR



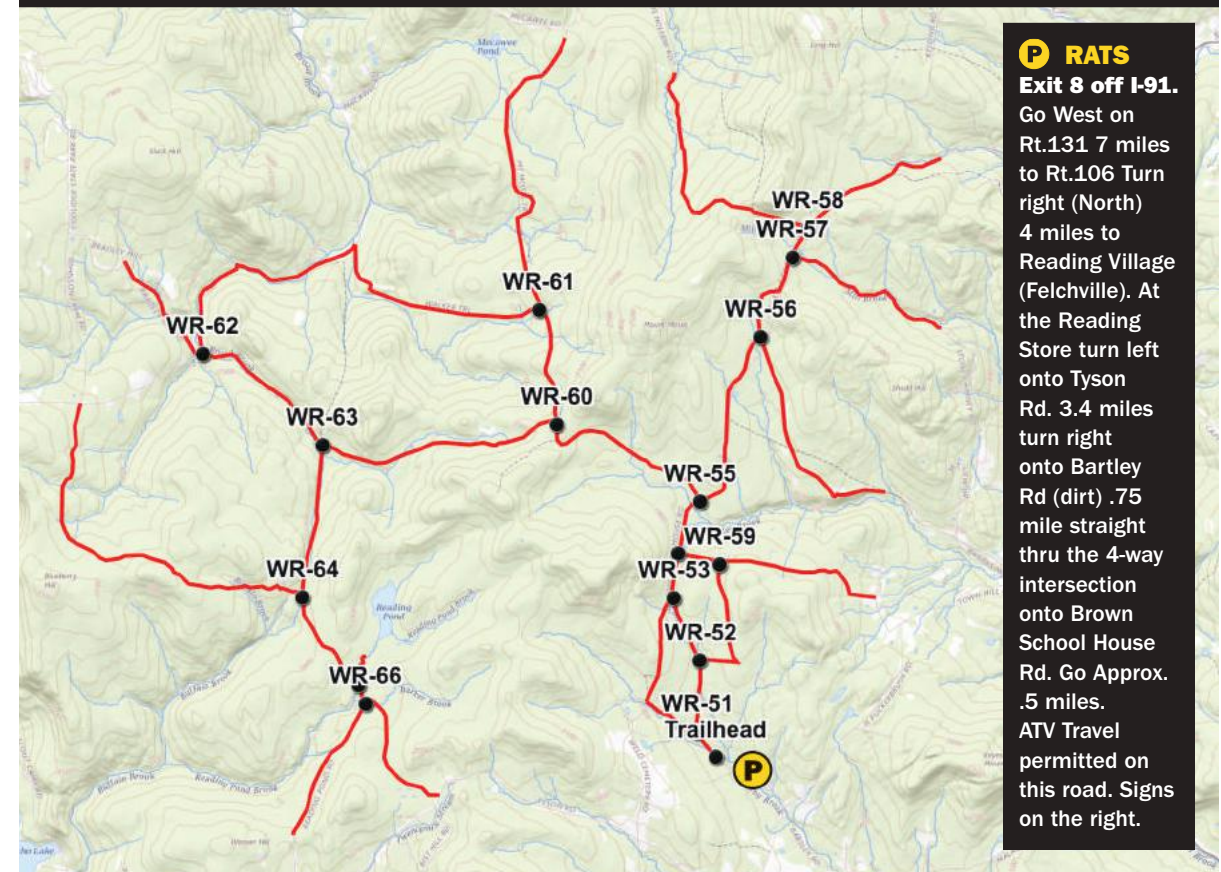
M West Fairlee WATV



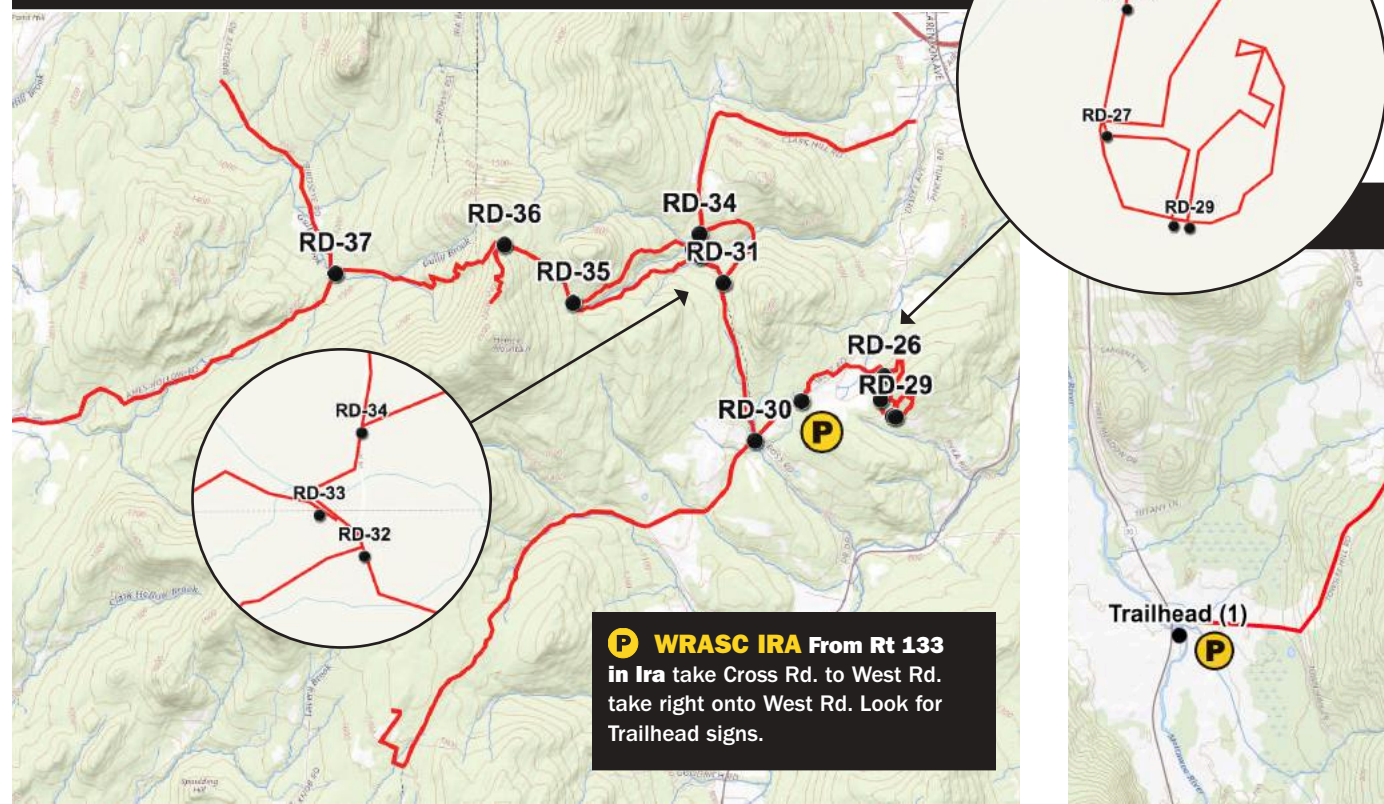
AT THIS TIME THERE IS NO ATV RIDING ON STATE LANDS, STATE PARKS INCLUDED

WHEN USING SHARED HIGHWAYS, PLEASE FOLLOW THE APPROPRIATE SIGNAGE AND SHARE THE TRAVELED LANE.

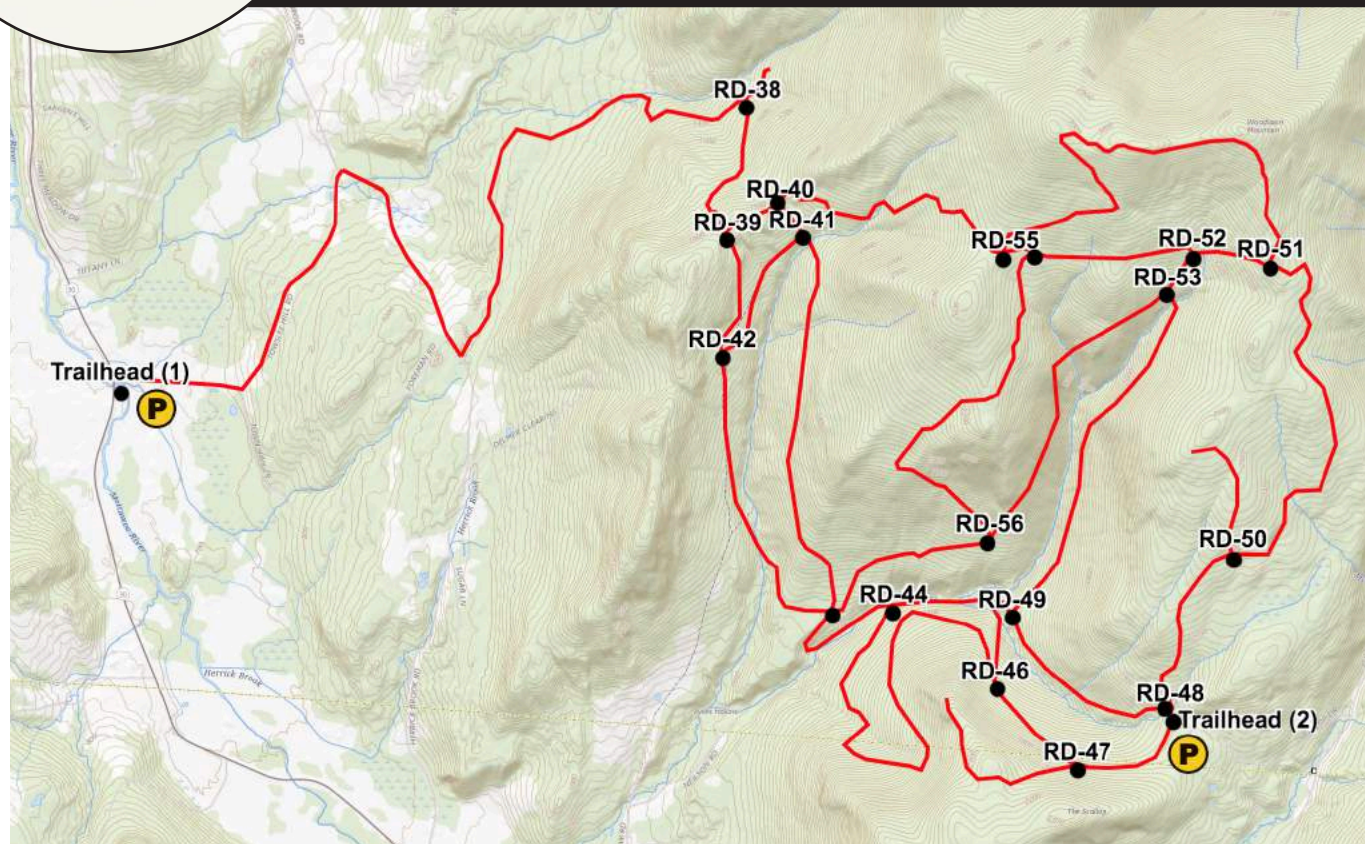
MAP P Reading RATS



MAP N Ira WRASC



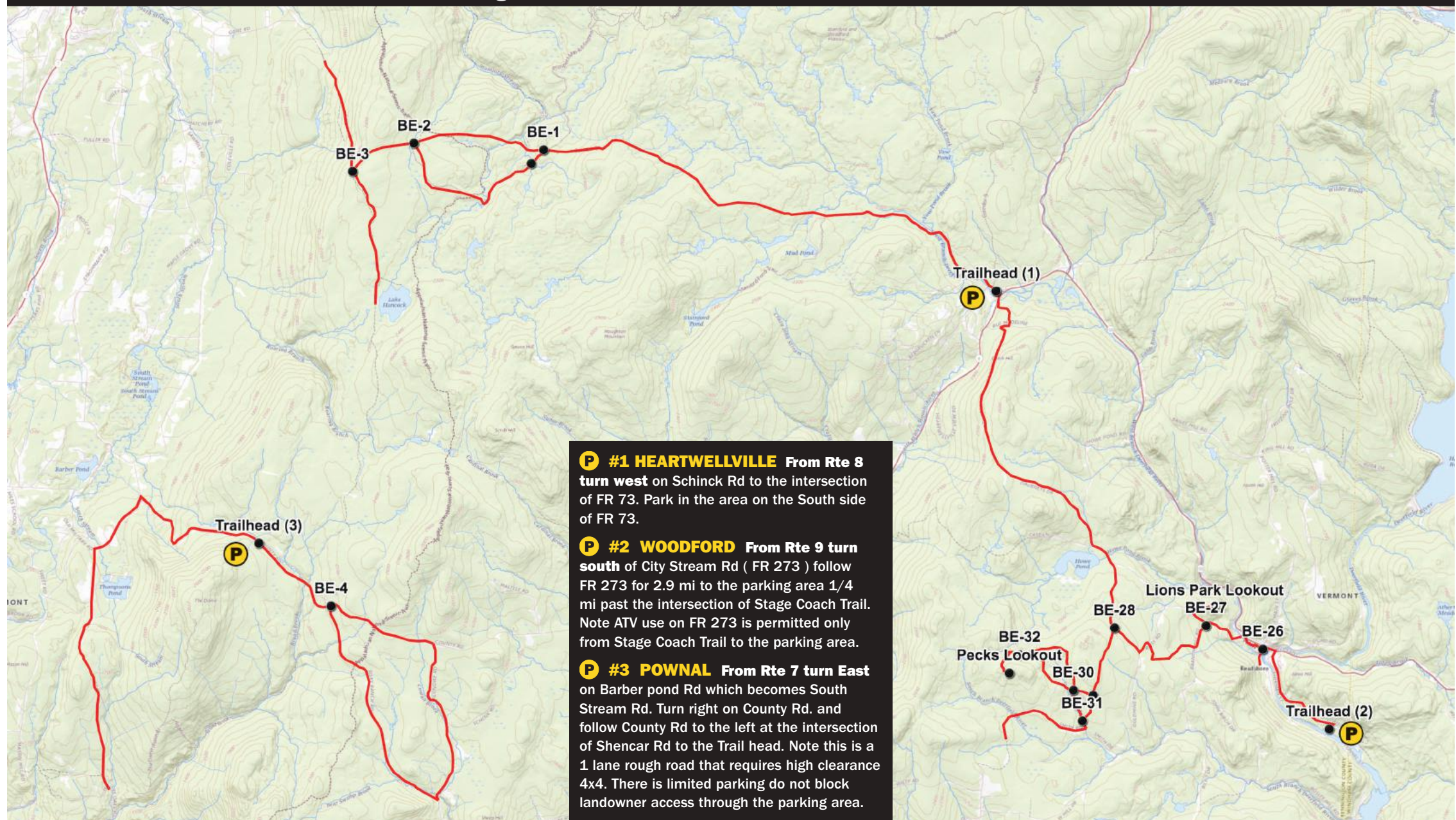
Q Danby WRASC



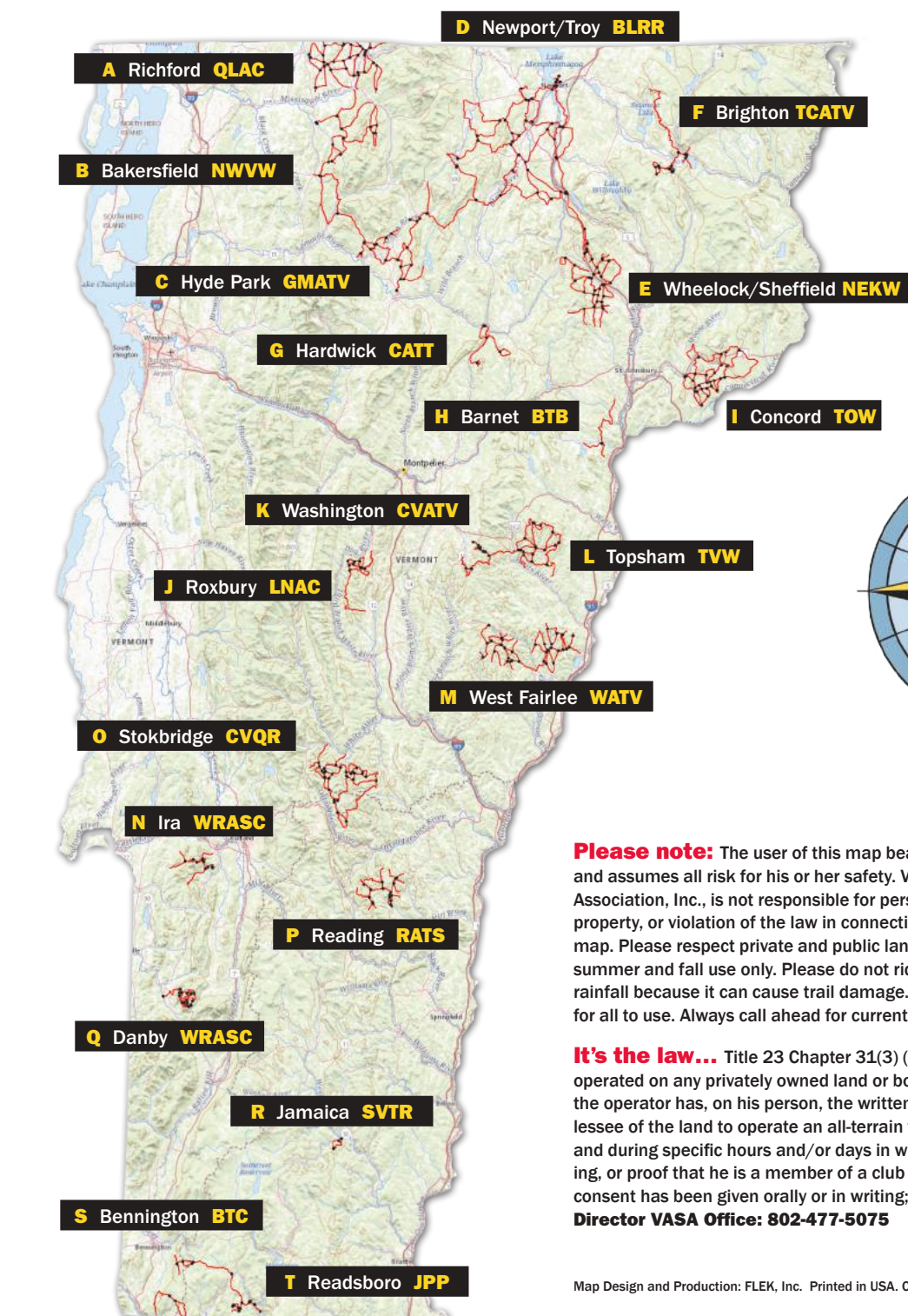
R Jamaica SVTR



MAP S Bennington BTC



MAP T Readsboro JPP



Please note: The user of this map bears full responsibility and assumes all risk for his or her safety. Vermont ATV Sportman's Association, Inc. is not responsible for personal injury, damage to property, or violation of the law in connection with the use of this map. Please respect private and public lands. This map is for spring, summer and fall use only. Please do not ride in the rain or after heavy rainfall because it can cause trail damage. Help us preserve the trails for all to use. Always call ahead for current trail conditions.

It's the law... Title 23 Chapter 31.(B) An ATV MAY NOT be operated on any privately owned land or body of private water unless the operator has, on his person, the written consent of the owner or lessee of the land to operate an all-terrain vehicle in the specific area and during specific hours and/or days in which the operator is operating, or proof that he is a member of a club or association to which consent has been given orally or in writing; **Danny Hale, Executive Director VASA Office: 802-477-5075**