

Vermont Clubs

ORANGE COUNTY
BRT Bennington
 Doug Westlake
 4045 State St. Bennington, VT 05201
 (802) 785-2140

BENNINGTON COUNTY
ATV Club
 Adam Lane
 498-5990
 (802) 249-9730

WINDHAM COUNTY
SVTR Southern Vermont Trail Riders
 Bill Chiles
 387-4830
 (802) 387-4830

FRANKLIN COUNTY
Vermont Wheelers
 Mathew Cole
 527-0646
 (802) 229-5660

LANCASTER COUNTY
ATV Club
 Mike Corman
 234-5640
 (802) 228-8191

LAUREL COUNTY
RATS Reading All Terrain Quad Runners
 Chuck Lyman
 234-5640
 (802) 228-8191

LAUREL COUNTY
ATV Club
 Scott Boyce
 782-6150
 (802) 228-8191

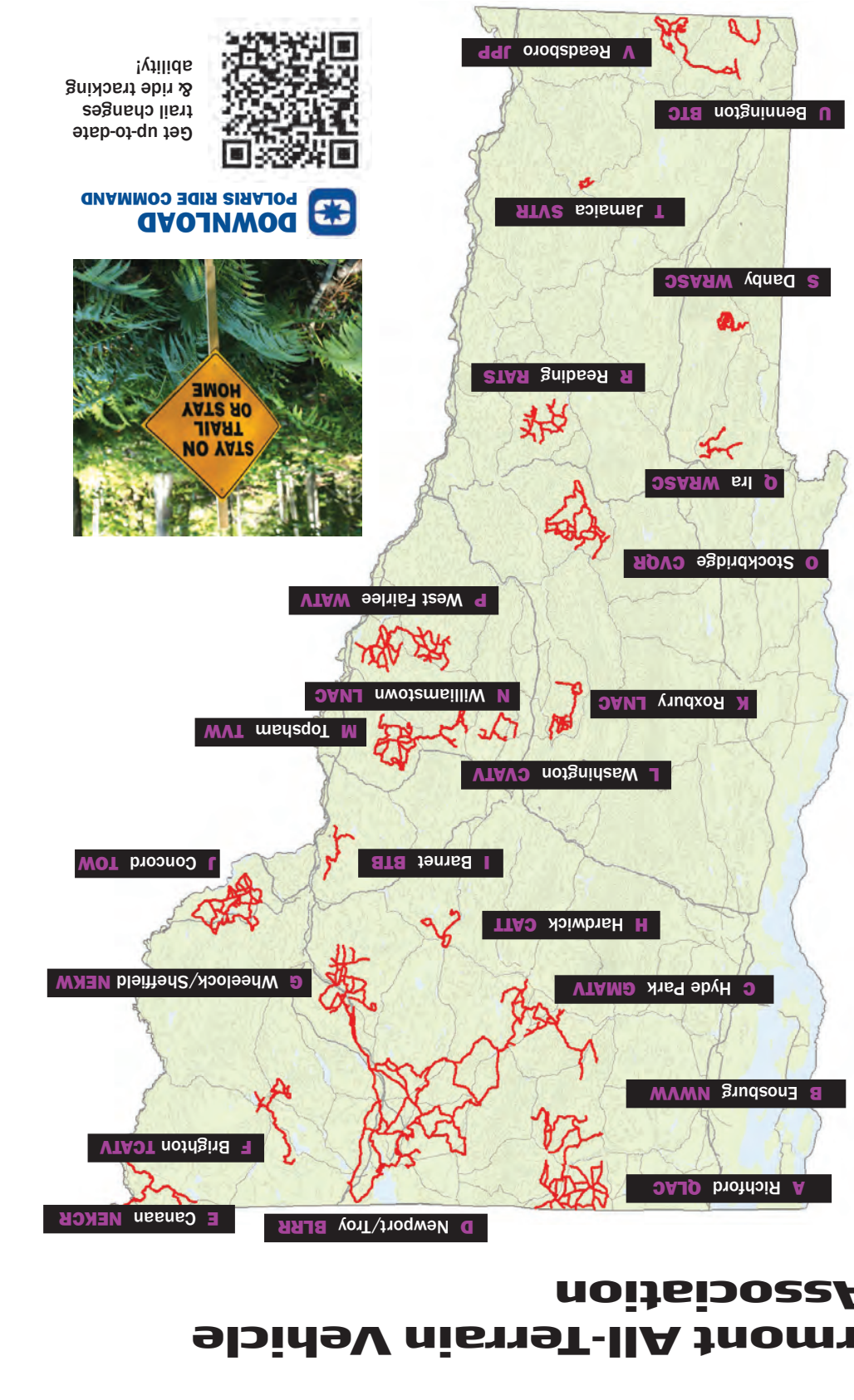
LAUREL COUNTY
ATV Club
 Scott Boyce
 782-6150
 (802) 228-8191

LAUREL COUNTY
ATV Club
 Scott Boyce
 782-6150
 (802) 228-8191

LAUREL COUNTY
ATV Club
 Scott Boyce
 782-6150
 (802) 228-8191

Get up-to-date trail changes & ride tracking ability!

DOWNLOAD POLARIS RIDE COMMAND



VASA: The Vermont All-Terrain Vehicle Sportsman's Association

ASA is the statewide association of local ATV clubs. authorized by the state of Vermont to develop ATV trails throughout the state. VASA is dedicated to developing, promoting and conserving in Vermont, and is providing trail access through leadership, land stewardship, partnerships, and collaborations with federal land managers, is working to develop and manage a statewide and local trails, for the enjoyment of Vermont's families and guests. You can help by joining and becoming active in your local club, practicing good ATV ethics and trail safety, and presenting a good image of our sport each and every time you ride. Each year to open up and maintain trails in their communities. Show them your appreciation by being an ambassador for them, their club and your Association. They will thank you and creating even more trails. Please ride responsibly while enjoying the VASA trail system. Please take a moment to thank the landowners who generously allow us to use their land, and please remember that it is a privilege to use your ATV on their land, not a right.

STAY ON TRAIL OR STAY HOME

TRAILMAP

VERMONT ATV SPORTSMAN'S ASSOCIATION

VASA: Rules & Safety Information

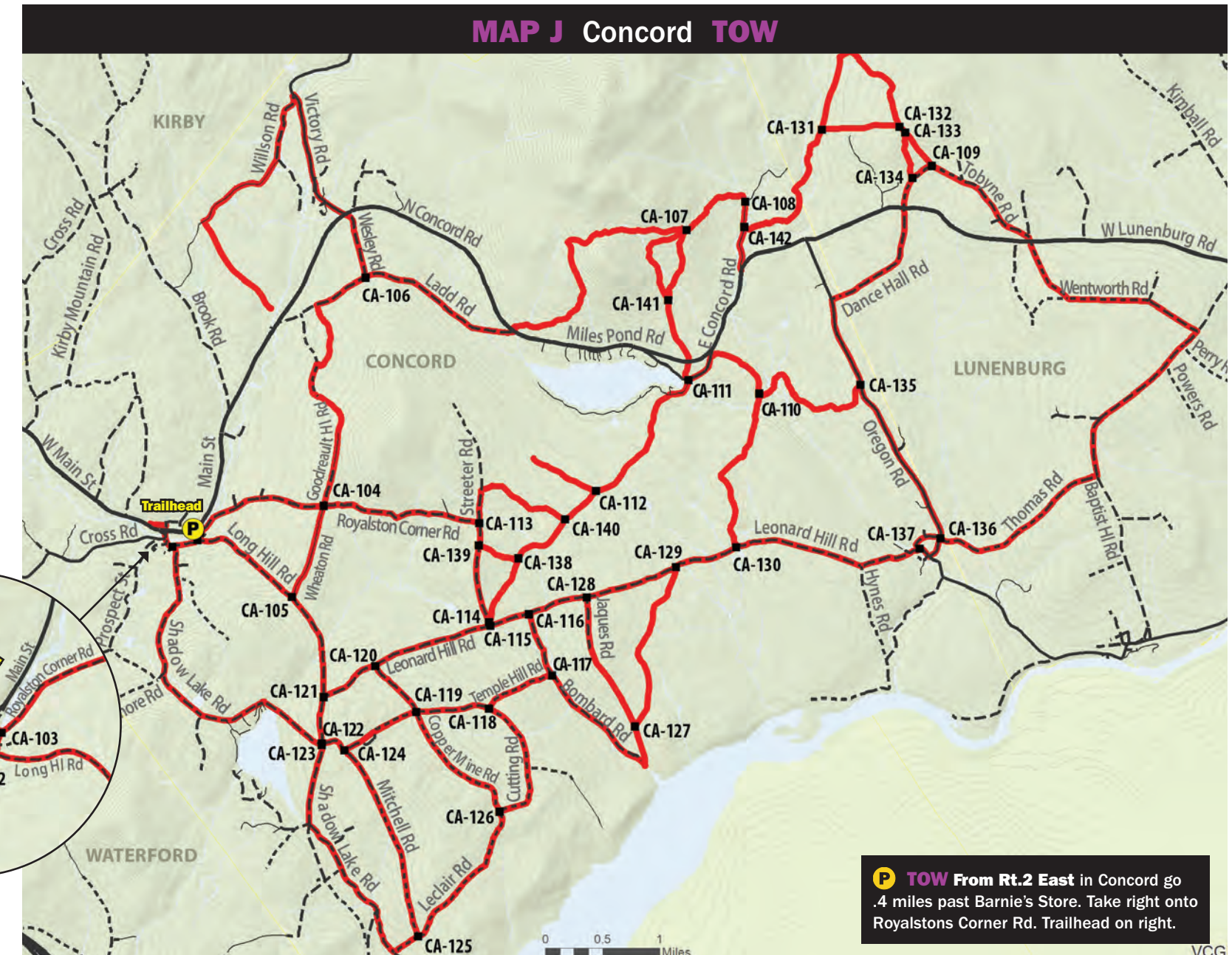
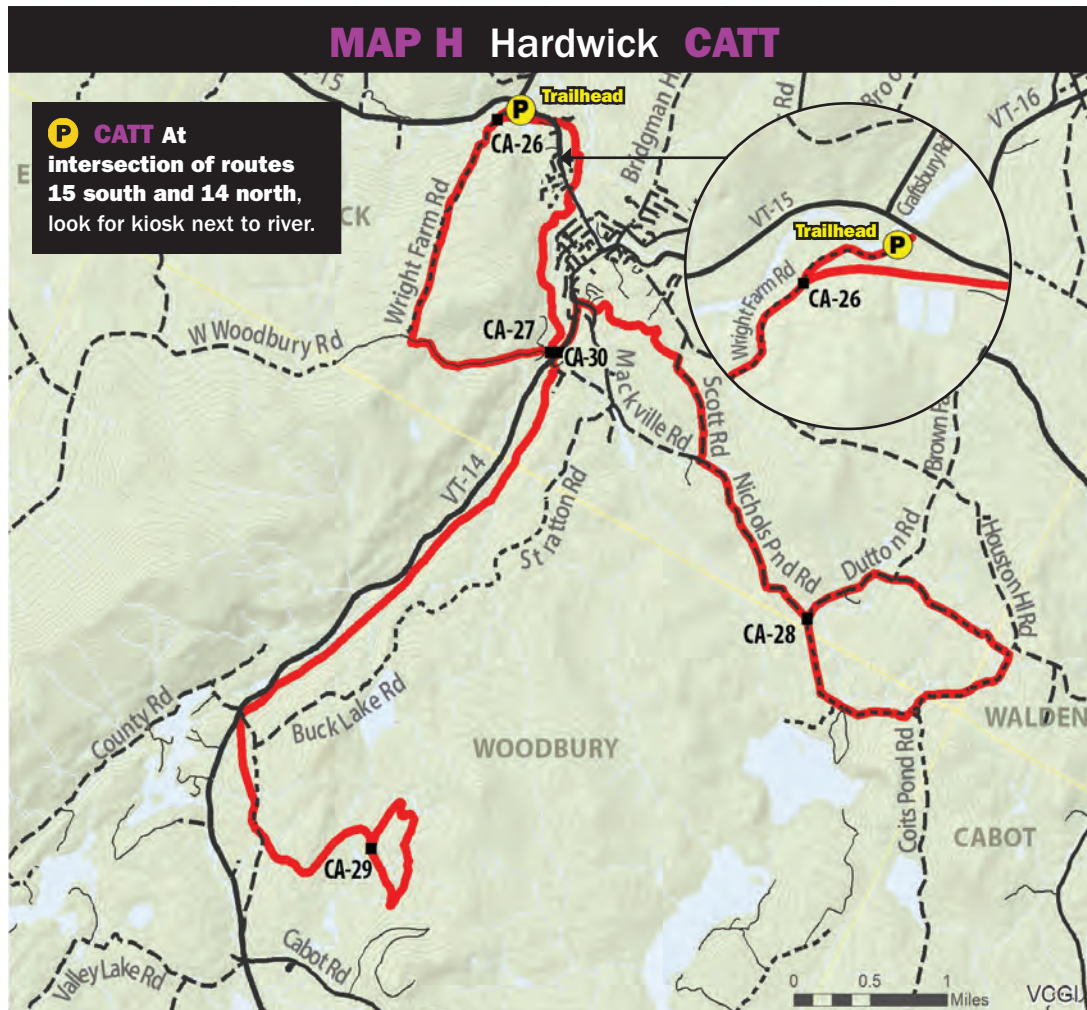
To ensure that the trails are safe and enjoyable for yourself and others, know and obey these trail rules!

- Stay on marked trails, and state and federal laws.
- All ATVs must have valid registration and current membership deal displayed.
- Trails will open and close per the landowner, at any time.
- Practice carry-in, carry-out stewardship. Do not drive, or pursue, wildlife or livestock.
- Only use roads designated as "open" for ATVs. Learn all controls and safety devices before you ride an ATV course.
- Take an ATV safety course.
- Read your owner's manual. Twice.
- Follow all ATV safety recommendations from the manufacturer.
- Always wear a helmet & eye protection.
- Never let young or inexperienced riders operate ATVs without proper instruction and supervision.
- Never use alcohol or drugs when you ride.
- Never ride alone, and tell some one your route and plans.
- Obey the local, state, and federal laws.
- Less sound = more ground.
- Tread lightly!

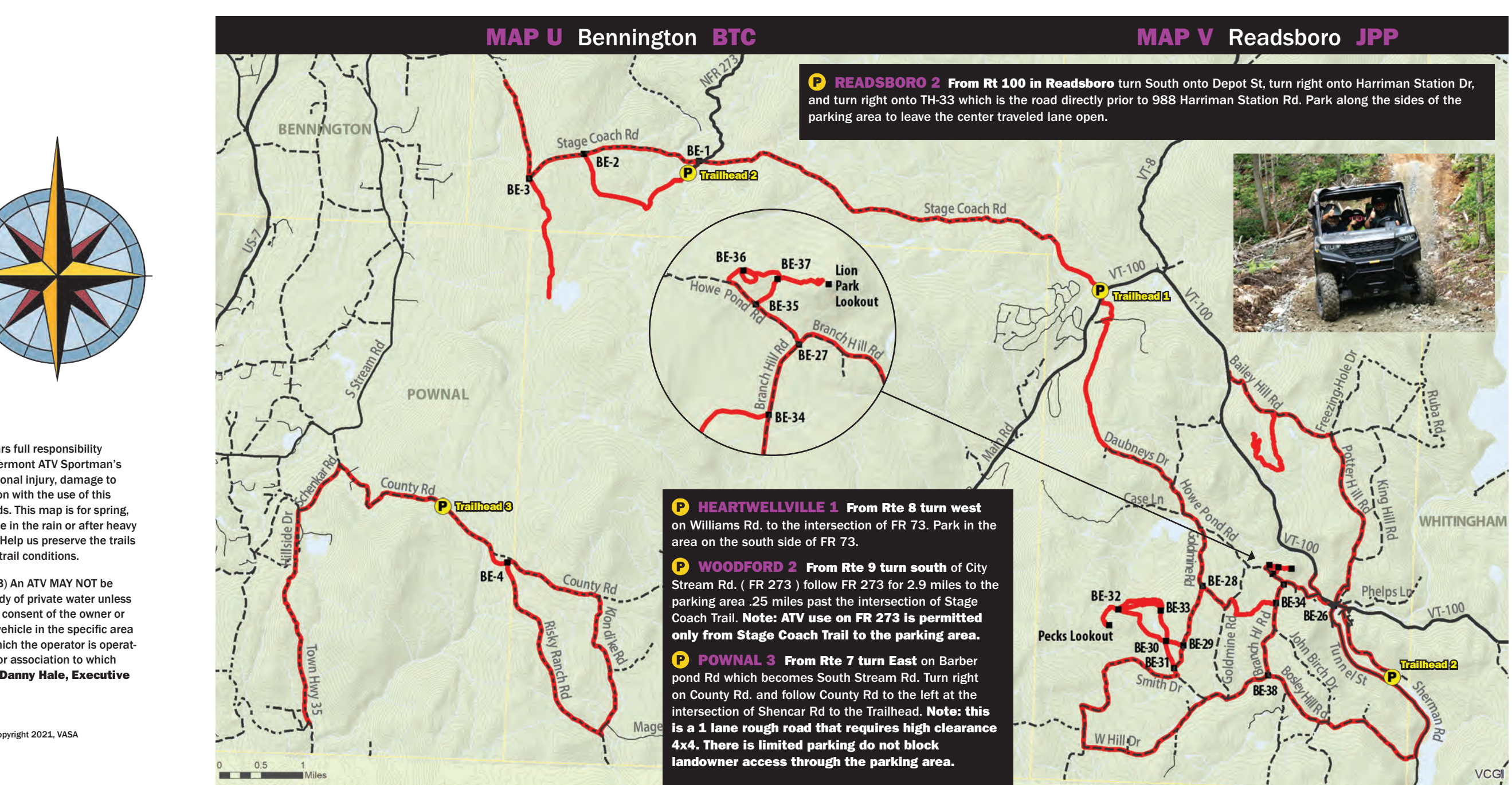
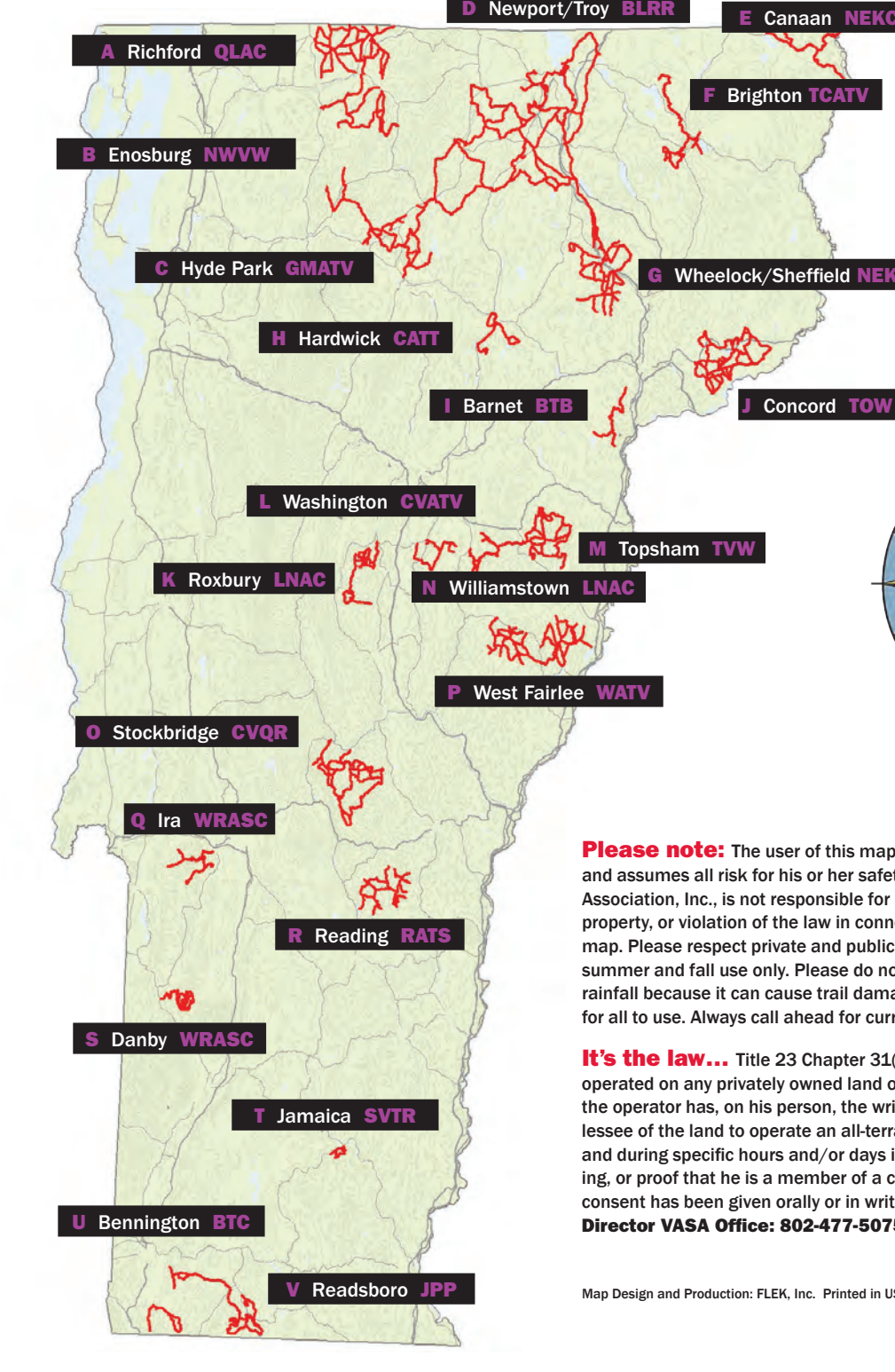
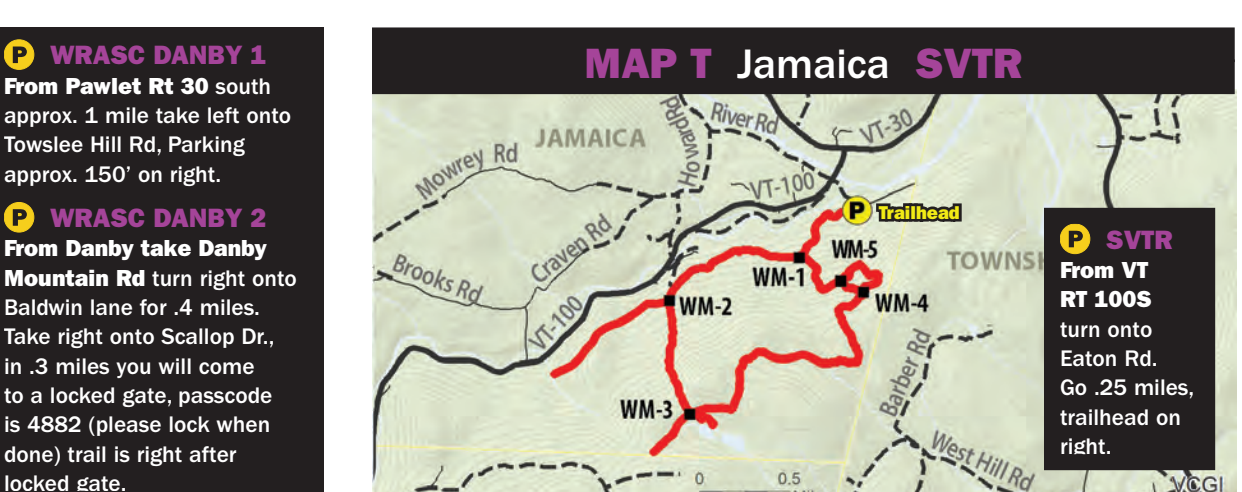
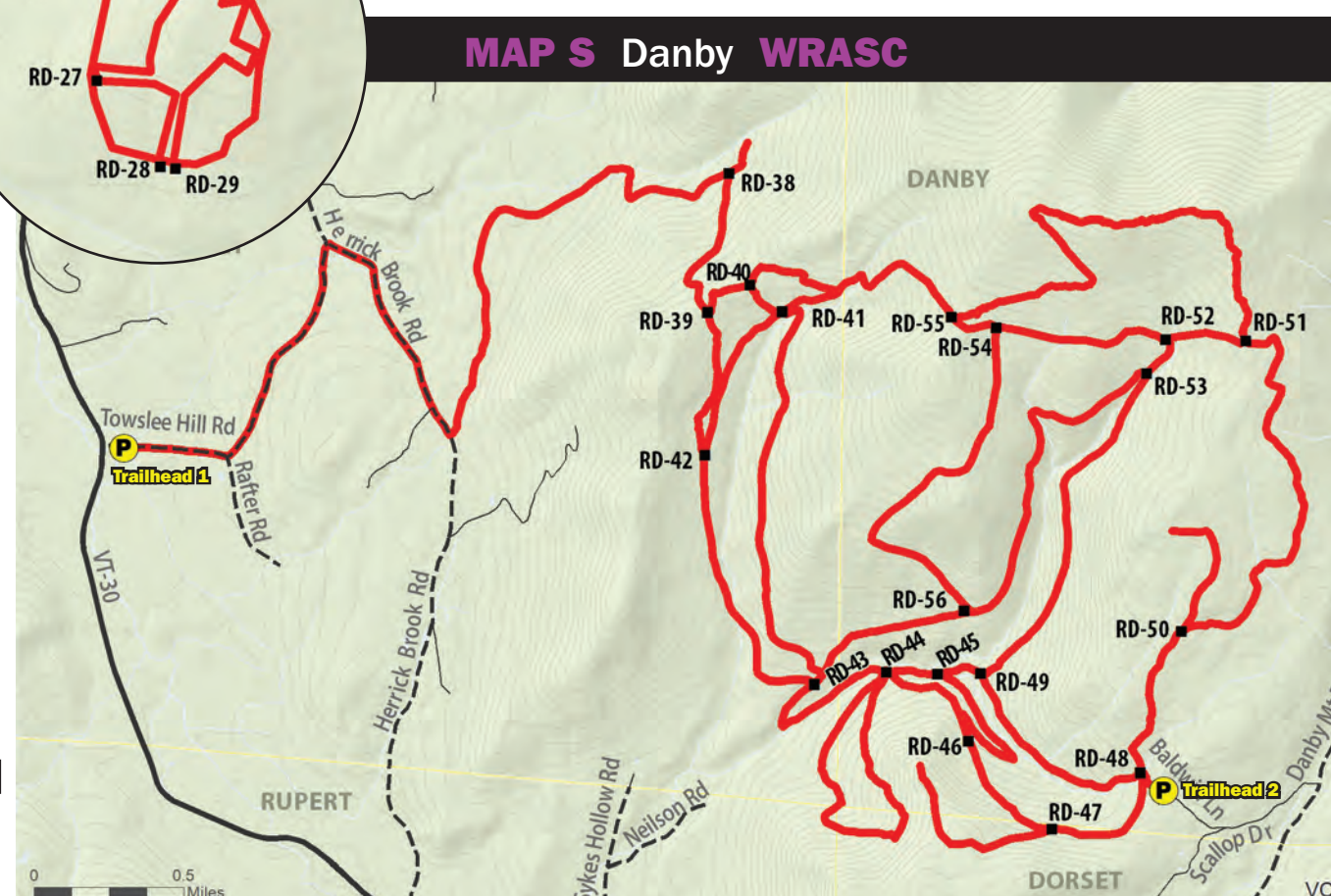
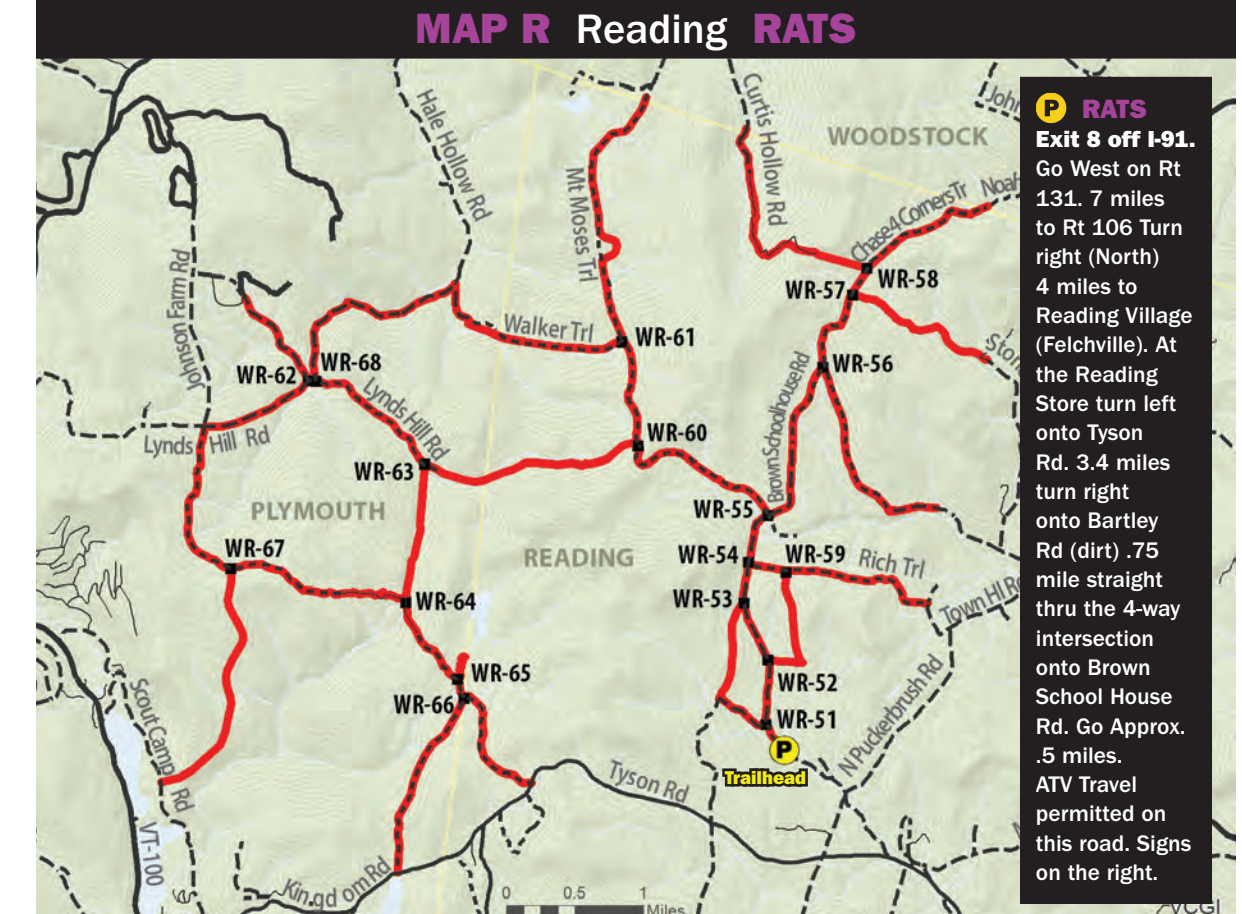
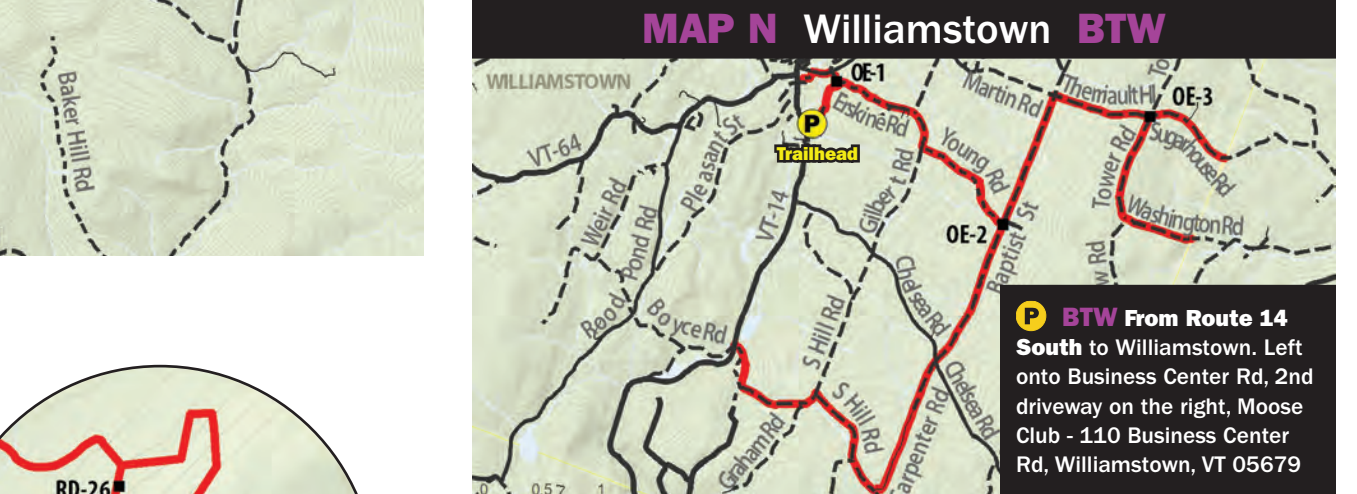
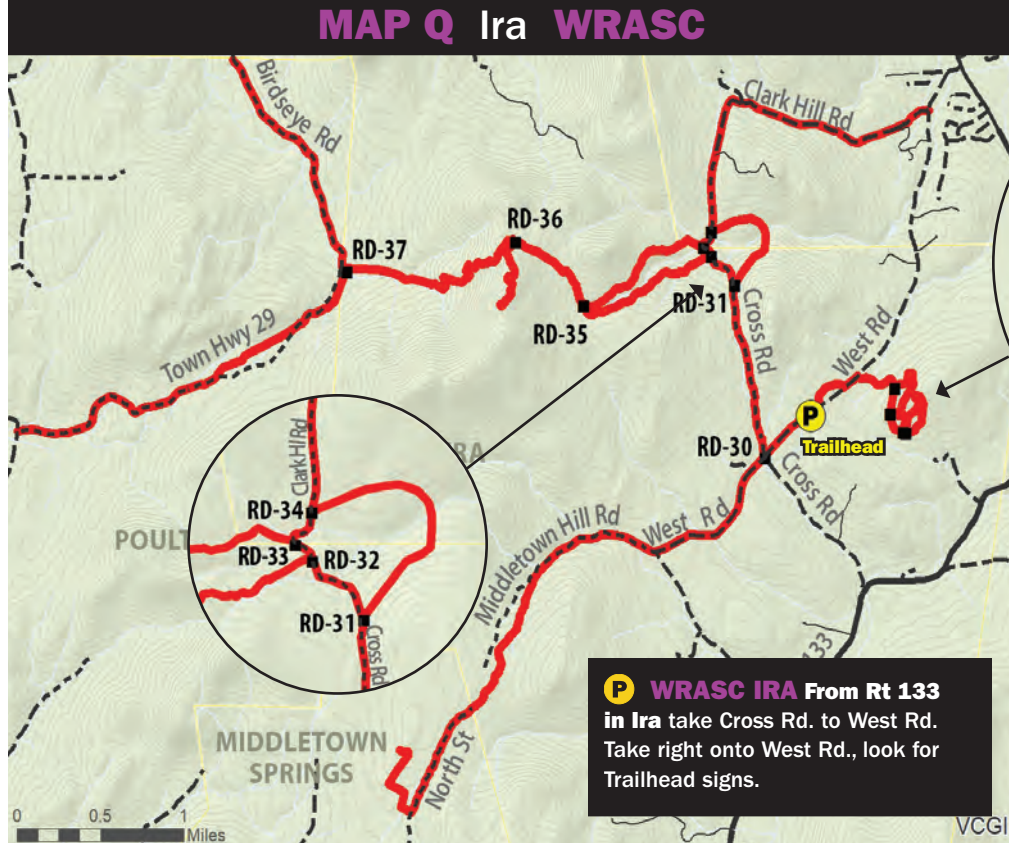
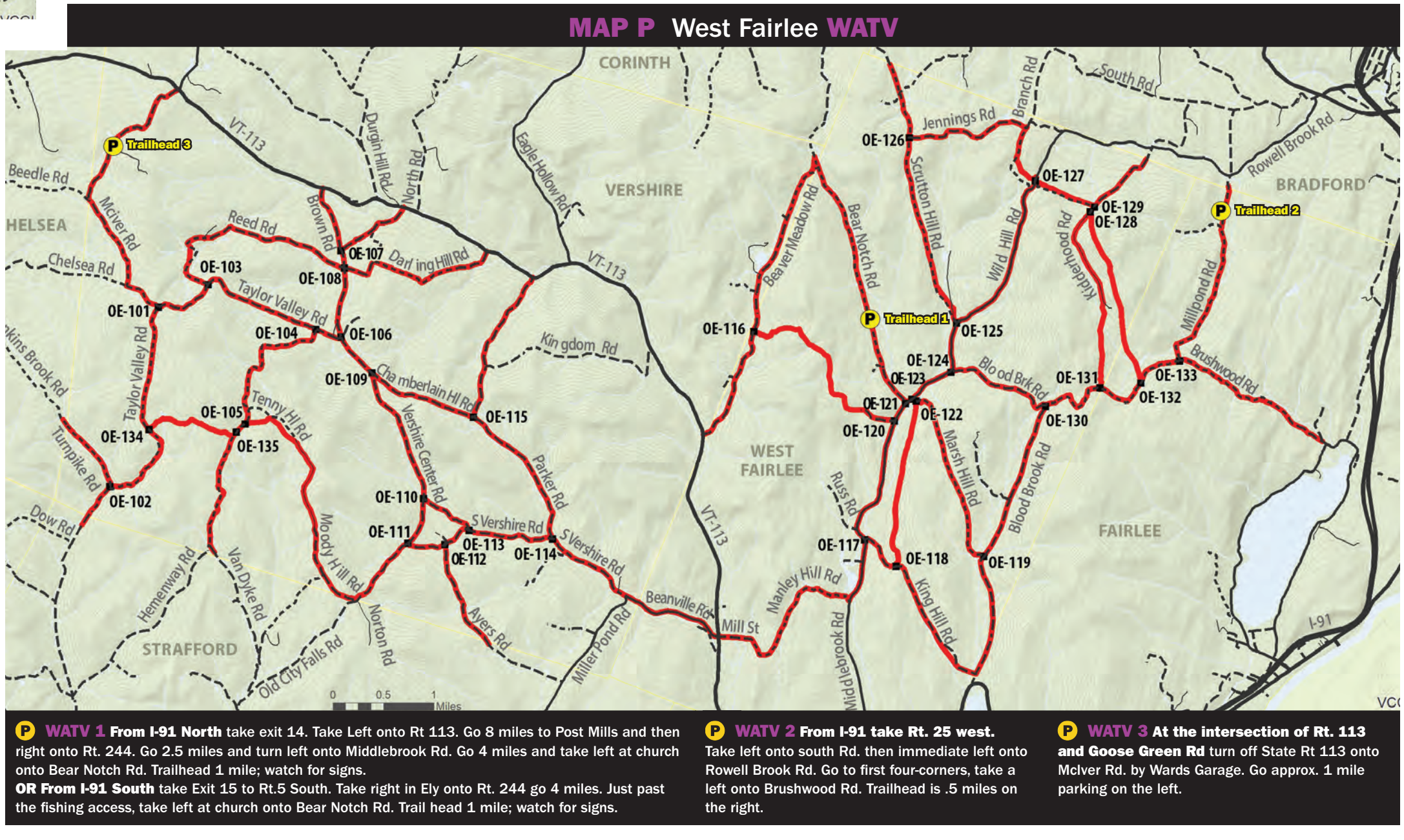
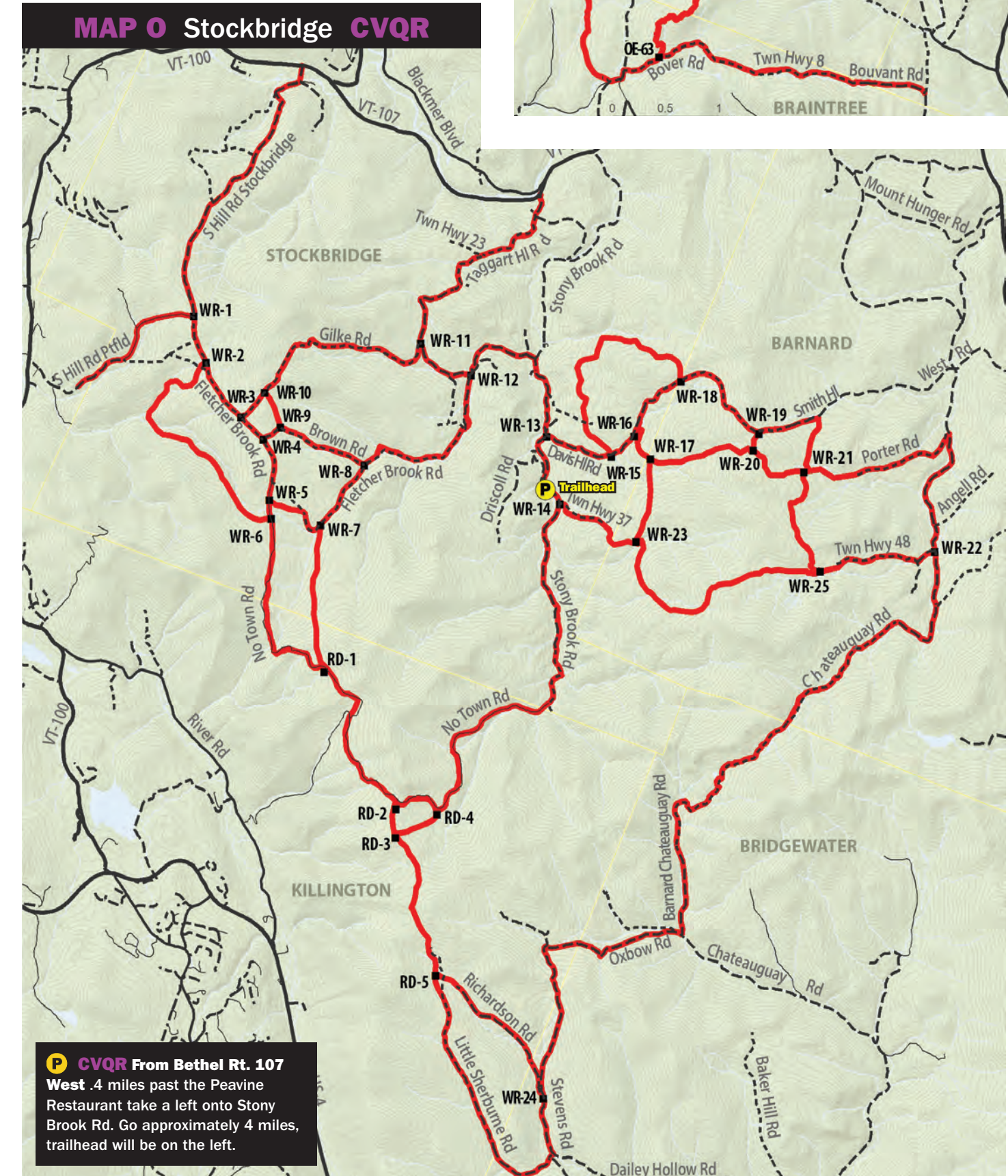
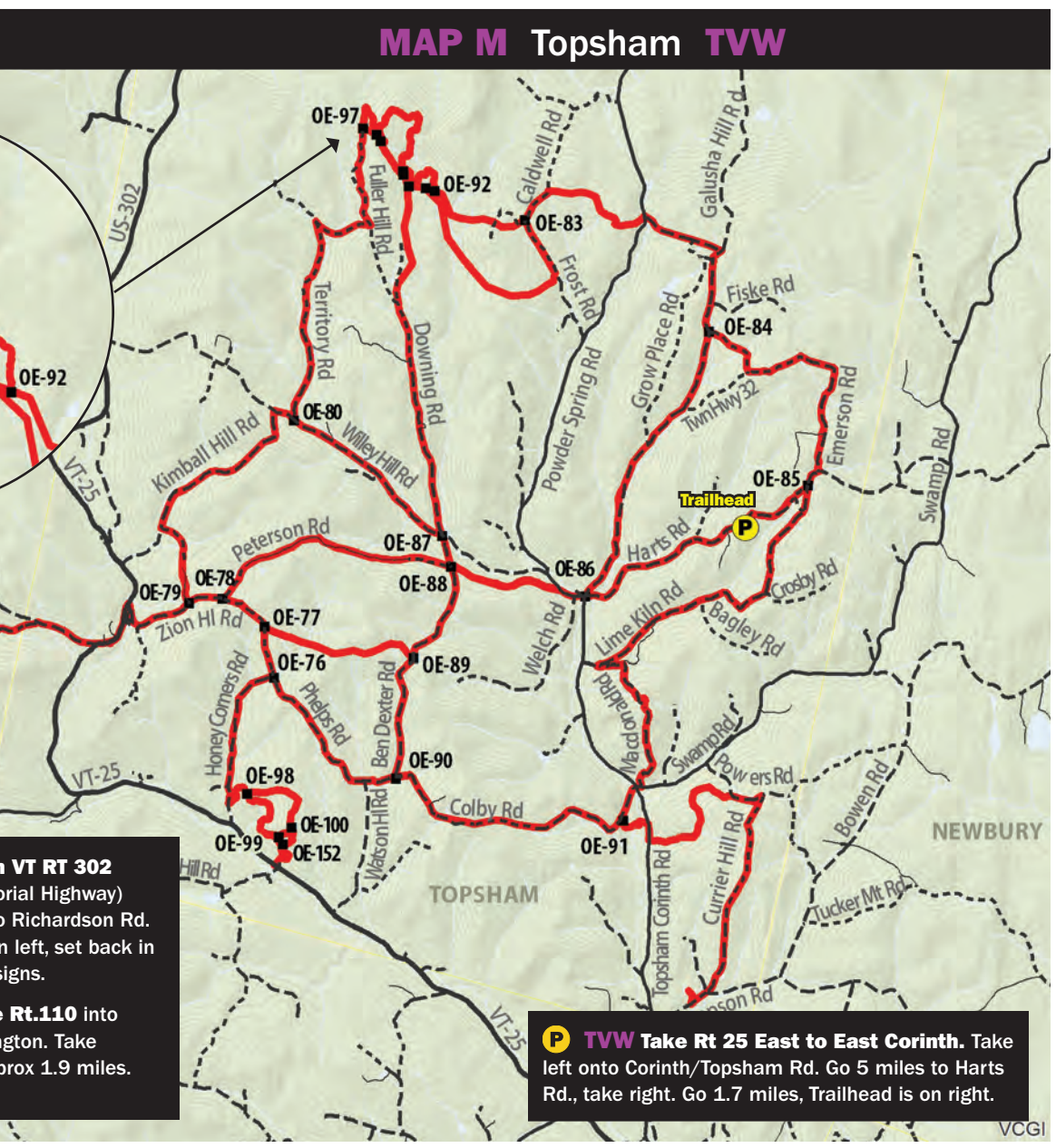
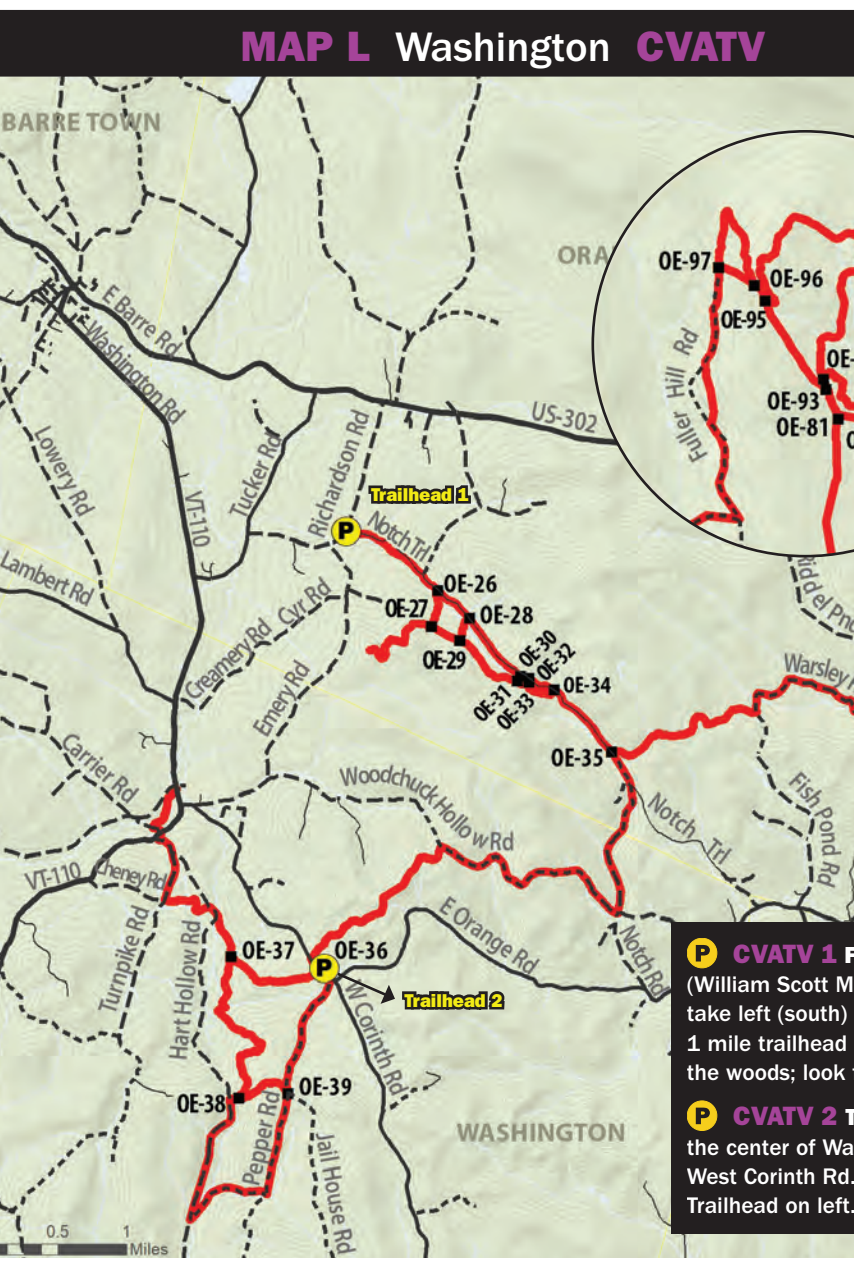
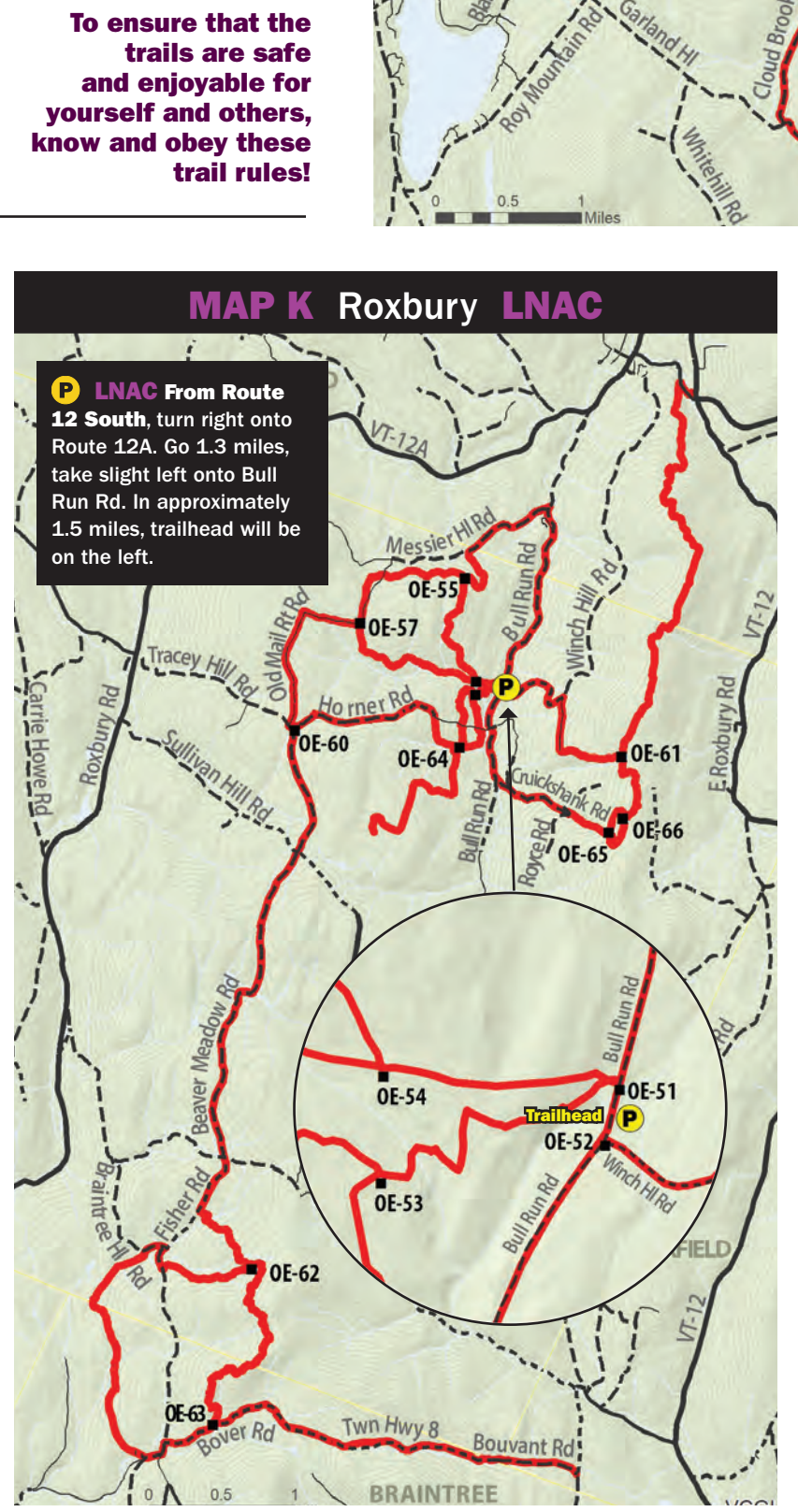
VERMONT ATV SPORTSMAN'S ASSOCIATION

14 Don Camp Drive, Barre, Vermont 05641
 (802) 477-5075 email: office@vasa.org
 Department of Motor Vehicles (802) 828-2000
 Department of Fish and Wildlife (802) 828-1000
 Department of Tourism (802) 828-3676

2/21 | 6:58M | Design by Pika, Inc. | Pika.com



- Stay on marked trails.
- Abide by all VASA rules; & state & federal ATV laws.
- All ATVs must have valid registration & current membership decal displayed.
- Trails will open & close per the landowner.
- Reckless or negligent operation is not permitted at any time.
- Practice "carry-in, carry-out" stewardship.
- Do not drive, or pursue, wildlife or livestock.
- Only use roads designated as "open" for ATVs.
- Learn all controls & safety devices before you ride your ATV.
- Take an ATV safety course.
- Read your owner's manual. Twice.
- Follow all ATV safety recommendations from the manufacturer.
- Wear protective clothing when you ride.
- Always wear a helmet & eye protection.
- Never let young or inexperienced riders operate ATVs without proper instruction & supervision.
- Never use alcohol or drugs when you ride.
- Never Ride alone, & tell someone your route & plans.
- Obey the local, state, & federal laws.
- Never modify the exhaust system.
- Less sound = more ground. Tread lightly!



Please note: The user of this map bears full responsibility and assumes all risk for his or her safety. Vermont ATV Sportman's Association, Inc. is not responsible for personal injury, damage to property, or violation of the law in connection with the use of this map. Please respect private and public lands. This map is for spring, summer and fall use only. Please do not ride in the rain or after heavy rainfall because it can cause trail damage. Help us preserve the trails for all to use. Always call ahead for current trail conditions.

It's the law... Title 23 Chapter 31(3) (B) An ATV MAY NOT be operated on any privately owned land or body of private water unless the operator has, on his person, the written consent of the owner or lessee of the land to operate an all-terrain vehicle in the specific area and during specific hours and/or days in which the operator is operating, or proof that he is a member of a club or association to which consent has been given orally or in writing. **Danny Hale, Executive Director VASA Office: 802-477-5075**

